

Datasheet for ABIN6743105
anti-FAM46A antibody (N-Term)



[Go to Product page](#)

1 Image

Overview

| | |
|----------------------|---------------------------------------|
| Quantity: | 100 µL |
| Target: | FAM46A |
| Binding Specificity: | N-Term |
| Reactivity: | Human, Monkey |
| Host: | Rabbit |
| Clonality: | Polyclonal |
| Conjugate: | This FAM46A antibody is un-conjugated |
| Application: | Western Blotting (WB) |

Product Details

| | |
|-----------------------|---|
| Immunogen: | Synthetic peptide from N-Terminus of human FAM46A (Q96IP4, NP_060103). Percent identity by BLAST analysis: Human, Chimpanzee, Gorilla, Monkey (100%), Mouse, Horse, Pig, Drosophila (91%), Gibbon (86%), Salmon, Zebrafish (83%). Type of Immunogen: Synthetic peptide |
| Specificity: | Human FAM46A |
| Predicted Reactivity: | Percent identity by BLAST analysis: Human (100%) Horse, Pig (91%). |
| Purification: | Immunoaffinity purified |

Target Details

| | |
|---------|--------|
| Target: | FAM46A |
|---------|--------|

Target Details

Alternative Name: [FAM46A \(FAM46A Products\)](#)

Background: Name/Gene ID: FAM46A

Synonyms: FAM46A, C6orf37, Protein FAM46A, XTP11, Retinal expressed gene C6orf37

Gene ID: 55603

NCBI Accession: [NP_060103](#)

UniProt: [Q96IP4](#)

Application Details

Application Notes: Approved: WB (0.2 - 1 µg/mL)

Usage: Western Blot: Suggested dilution at 1 µg/mL in 5 % skim milk / PBS buffer, and HRP conjugated anti-Rabbit IgG should be diluted in 1: 50,000 - 100,000 as secondary antibody.

Comment: Target Species of Antibody: Human

Restrictions: For Research Use only

Handling

Format: Lyophilized

Reconstitution: Distilled water

Concentration: Lot specific

Buffer: Lyophilized from PBS with 2 % sucrose

Handling Advice: Avoid repeat freeze-thaw cycles.

Storage: 4 °C, -20 °C

Storage Comment: Long term: -20°C, the use of 50% glycerol is recommended if storing aliquots in -20°C for long term use (up to 1 year)

Short term (less than 1 week): 4°C. Avoid freeze-thaw cycles.

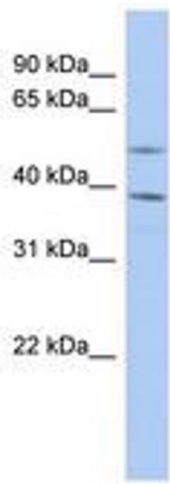


Image 1.