

Datasheet for ABIN6743106  
**anti-EPS8-Like 1 antibody (C-Term)**[Go to Product page](#)

## 1 Image

## Overview

Quantity:	100 µL
Target:	EPS8-Like 1 (EPS8L1)
Binding Specificity:	C-Term
Reactivity:	Human, Rat, Dog, Horse, Guinea Pig, Monkey, Bat
Host:	Rabbit
Clonality:	Polyclonal
Conjugate:	This EPS8-Like 1 antibody is un-conjugated
Application:	Western Blotting (WB)

## Product Details

Immunogen:	Synthetic peptide from C-Terminus of human EPS8L1 (Q8TE68, NP_060199). Percent identity by BLAST analysis: Human, Gorilla, Gibbon, Monkey, Galago, Panda, Dog, Bat, Horse (100%), Mouse, Elephant, Bovine, Platypus, Xenopus, Zebrafish (92%), Rat, Guinea pig, Seabass (85%).  Type of Immunogen: Synthetic peptide
Specificity:	Human EPS8L1
Predicted Reactivity:	Percent identity by BLAST analysis: Human, Dog, Horse (100%) Mouse, Bovine, Zebrafish (92%) Rat, Guinea pig (85%).
Purification:	Immunoaffinity purified

## Target Details

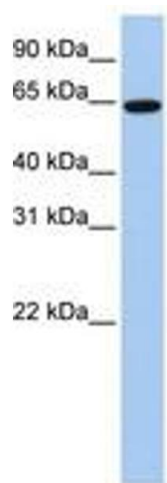
Target:	EPS8-Like 1 (EPS8L1)
Alternative Name:	EPS8L1 ( <a href="#">EPS8L1 Products</a> )
Background:	Name/Gene ID: EPS8L1  Synonyms: EPS8L1, EPS8-like 1, EPS8-related protein 1, EPS8R1, EPS8-like protein 1, DRC3, PP10566
Gene ID:	54869
NCBI Accession:	<a href="#">NP_060199</a>
UniProt:	<a href="#">Q8TE68</a>

## Application Details

Application Notes:	Approved: WB (0.2 - 1 µg/mL)  Usage: Western Blot: Suggested dilution at 1 µg/mL in 5 % skim milk / PBS buffer, and HRP conjugated anti-Rabbit IgG should be diluted in 1: 50,000 - 100,000 as secondary antibody.
Comment:	Target Species of Antibody: Human
Restrictions:	For Research Use only

## Handling

Format:	Lyophilized
Reconstitution:	Distilled water
Concentration:	Lot specific
Buffer:	Lyophilized from PBS with 2 % sucrose
Handling Advice:	Avoid repeat freeze-thaw cycles.
Storage:	4 °C, -20 °C
Storage Comment:	Long term: -20°C, the use of 50% glycerol is recommended if storing aliquots in -20°C for long term use (up to 1 year)  Short term (less than 1 week): 4°C. Avoid freeze-thaw cycles.



**Image 1.**