



[Go to Product page](#)

Datasheet for ABIN6743109
anti-PAPPA2 antibody (AA 108-157)

1 Image

Overview

Quantity:	100 µL
Target:	PAPPA2
Binding Specificity:	AA 108-157
Reactivity:	Human, Guinea Pig
Host:	Rabbit
Clonality:	Polyclonal
Conjugate:	This PAPPA2 antibody is un-conjugated
Application:	Western Blotting (WB)

Product Details

Immunogen:	Synthetic peptide located between aa108-157 of human PAPPA2 (A9Z1Y8, NP_068755). Percent identity by BLAST analysis: Human, Gorilla, Gibbon (100%), Monkey (85%), Guinea pig (84%). Type of Immunogen: Synthetic peptide
Specificity:	Human PAPPA2
Predicted Reactivity:	Percent identity by BLAST analysis: Human (100%) Guinea pig (84%).
Purification:	Immunoaffinity purified

Target Details

Target:	PAPPA2
---------	--------

Target Details

Alternative Name: PAPP2 / Pappalysin 2 ([PAPP2 Products](#))

Background: Name/Gene ID: PAPP2

Synonyms: PAPP2, PAPP-A2, PAPP-E, PLAC3, Pappalysin-2, PAPPE, Placenta-specific 3, Pappalysin 2

Gene ID: 60676

NCBI Accession: [NP_068755](#)

UniProt: [Q9BXP8](#)

Application Details

Application Notes: Approved: WB (0.2 - 1 µg/mL)

Usage: Western Blot: Suggested dilution at 1 µg/mL in 5 % skim milk / PBS buffer, and HRP conjugated anti-Rabbit IgG should be diluted in 1: 50,000 - 100,000 as secondary antibody.

Comment: Target Species of Antibody: Human

Restrictions: For Research Use only

Handling

Format: Lyophilized

Reconstitution: Distilled water

Concentration: Lot specific

Buffer: Lyophilized from PBS with 2 % sucrose

Handling Advice: Avoid repeat freeze-thaw cycles.

Storage: 4 °C, -20 °C

Storage Comment: Long term: -20°C, the use of 50% glycerol is recommended if storing aliquots in -20°C for long term use (up to 1 year)

Short term (less than 1 week): 4°C. Avoid freeze-thaw cycles.

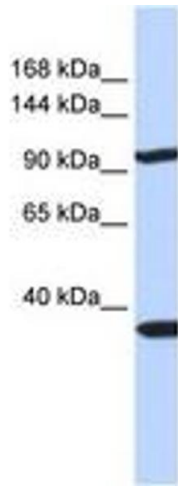


Image 1.