



[Go to Product page](#)

Datasheet for ABIN6743111
anti-DCUN1D1 antibody (C-Term)

1 Image

Overview

Quantity:	100 µL
Target:	DCUN1D1
Binding Specificity:	C-Term
Reactivity:	Human, Mouse, Cow, Dog, Horse, Rabbit, Guinea Pig, Chicken, Monkey, Xenopus laevis, Bat, Pig
Host:	Rabbit
Clonality:	Polyclonal
Conjugate:	This DCUN1D1 antibody is un-conjugated
Application:	Western Blotting (WB)

Product Details

Immunogen:	Synthetic peptide from C-Terminus of human DCUN1D1 (Q96GG9, NP_065691). Percent identity by BLAST analysis: Human, Chimpanzee, Gorilla, Gibbon, Monkey, Galago, Marmoset, Mouse, Elephant, Dog, Bovine, Bat, Rabbit, Horse, Pig, Guinea pig, Zebra finch, Chicken, Platypus, Xenopus (100%), Rat, Opossum, Lizard (92%), Salmon, Smelt, Stickleback, Pike (84%). Type of Immunogen: Synthetic peptide
Specificity:	Human DCUN1D1
Predicted Reactivity:	Percent identity by BLAST analysis: Human, Mouse, Dog, Bovine, Rabbit, Horse, Chicken, Xenopus (100%) Rat (92%).
Purification:	Immunoaffinity purified

Target Details

Target:	DCUN1D1
Alternative Name:	DCUN1D1 / SCCRO (DCUN1D1 Products)
Background:	Name/Gene ID: DCUN1D1 Synonyms: DCUN1D1, DCN1-like protein 1, DCNL1, DCUN1L1, RP42 homolog, RP42, Tes3, SCCRO, SCRO
Gene ID:	54165
NCBI Accession:	NP_065691
UniProt:	Q96GG9

Application Details

Application Notes:	Approved: WB (0.2 - 1 µg/mL) Usage: Western Blot: Suggested dilution at 1 µg/mL in 5 % skim milk / PBS buffer, and HRP conjugated anti-Rabbit IgG should be diluted in 1: 50,000 - 100,000 as secondary antibody.
Comment:	Target Species of Antibody: Human
Restrictions:	For Research Use only

Handling

Format:	Lyophilized
Reconstitution:	Distilled water
Concentration:	Lot specific
Buffer:	Lyophilized from PBS with 2 % sucrose
Handling Advice:	Avoid repeat freeze-thaw cycles.
Storage:	4 °C, -20 °C
Storage Comment:	Long term: -20°C, the use of 50% glycerol is recommended if storing aliquots in -20°C for long term use (up to 1 year) Short term (less than 1 week): 4°C. Avoid freeze-thaw cycles.

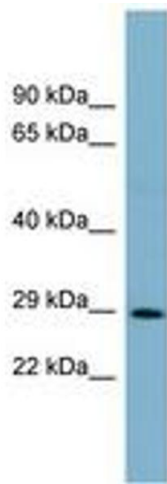


Image 1.