

Datasheet for ABIN6743117

anti-SLC19A3 antibody (AA 287-336)



[Go to Product page](#)

1 Image

Overview

Quantity:	100 µL
Target:	SLC19A3 (Slc19a3)
Binding Specificity:	AA 287-336
Reactivity:	Human, Mouse, Cow, Dog, Guinea Pig, Rabbit
Host:	Rabbit
Clonality:	Polyclonal
Conjugate:	This SLC19A3 antibody is un-conjugated
Application:	Western Blotting (WB)

Product Details

Immunogen:	<p>Synthetic peptide located between aa287-336 of human SLC19A3 (Q9BZV2, NP_079519). Percent identity by BLAST analysis: Human, Chimpanzee, Gorilla, Gibbon, Monkey, Mouse, Guinea pig (100%), Galago, Marmoset, Rat, Elephant (92%), Dog, Bovine, Bat, Rabbit, Horse (85%).</p> <p>Type of Immunogen: Synthetic peptide</p>
Specificity:	Human SLC19A3
Predicted Reactivity:	Percent identity by BLAST analysis: Human (100%) Rat (92%) Dog, Bovine, Rabbit (85%).
Purification:	Immunoaffinity purified

Target Details

Target:	SLC19A3 (Slc19a3)
Alternative Name:	SLC19A3 (Slc19a3 Products)
Background:	Name/Gene ID: SLC19A3 Subfamily: Reduced folate carrier Family: Transporter Synonyms: SLC19A3, Thiamine transporter 2, ThTr-2, THMD2, BBGD, THTR2
Gene ID:	80704
NCBI Accession:	NP_079519
UniProt:	Q9BZV2
Pathways:	Dicarboxylic Acid Transport

Application Details

Application Notes:	Approved: WB (0.2 - 1 µg/mL) Usage: Western Blot: Suggested dilution at 1 µg/mL in 5 % skim milk / PBS buffer, and HRP conjugated anti-Rabbit IgG should be diluted in 1: 50,000 - 100,000 as secondary antibody.
Comment:	Target Species of Antibody: Human
Restrictions:	For Research Use only

Handling

Format:	Lyophilized
Reconstitution:	Distilled water
Concentration:	Lot specific
Buffer:	Lyophilized from PBS with 2 % sucrose
Handling Advice:	Avoid repeat freeze-thaw cycles.
Storage:	4 °C, -20 °C
Storage Comment:	Long term: -20°C, the use of 50% glycerol is recommended if storing aliquots in -20°C for long term use (up to 1 year) Short term (less than 1 week): 4°C. Avoid freeze-thaw cycles.

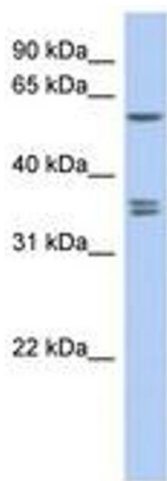


Image 1.