



## Datasheet for ABIN6743122 anti-CES2 antibody (AA 503-552)



[Go to Product page](#)

### 1 Image

#### Overview

Quantity:	100 µL
Target:	CES2
Binding Specificity:	AA 503-552
Reactivity:	Human
Host:	Rabbit
Clonality:	Polyclonal
Conjugate:	This CES2 antibody is un-conjugated
Application:	Western Blotting (WB)

#### Product Details

Immunogen:	Synthetic peptide located between aa503-552 of human CES2 (O00748, NP_932327). Percent identity by BLAST analysis: Human, Chimpanzee (100%), Gibbon (92%).  Type of Immunogen: Synthetic peptide
Specificity:	Human CES2
Predicted Reactivity:	Percent identity by BLAST analysis: Human (100%).
Purification:	Immunoaffinity purified

#### Target Details

Target:	CES2
Alternative Name:	CES2 / Esterase ( <a href="#">CES2 Products</a> )

## Target Details

---

Background:	Name/Gene ID: CES2  Synonyms: CES2, Carboxylesterase 2, CE-2, CES2A1, Cocaine esterase, Esterase, ICE, HCE-2, PCE-2
Gene ID:	8824
NCBI Accession:	<a href="#">NP_932327</a>
UniProt:	<a href="#">O00748</a>

## Application Details

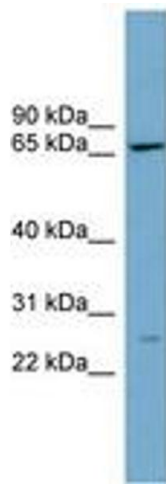
---

Application Notes:	Approved: WB (0.2 - 1 µg/mL)  Usage: Western Blot: Suggested dilution at 1 µg/mL in 5 % skim milk / PBS buffer, and HRP conjugated anti-Rabbit IgG should be diluted in 1: 50,000 - 100,000 as secondary antibody.
Comment:	Target Species of Antibody: Human
Restrictions:	For Research Use only

## Handling

---

Format:	Lyophilized
Reconstitution:	Distilled water
Concentration:	Lot specific
Buffer:	Lyophilized from PBS with 2 % sucrose
Handling Advice:	Avoid repeat freeze-thaw cycles.
Storage:	4 °C, -20 °C
Storage Comment:	Long term: -20°C, the use of 50% glycerol is recommended if storing aliquots in -20°C for long term use (up to 1 year)  Short term (less than 1 week): 4°C. Avoid freeze-thaw cycles.



**Image 1.**