



[Go to Product page](#)

Datasheet for ABIN6743138
anti-RCHY1 antibody (AA 36-85)

1 Image

Overview

Quantity:	100 µL
Target:	RCHY1
Binding Specificity:	AA 36-85
Reactivity:	Human, Rat, Cow, Horse, Rabbit, Sheep, Monkey
Host:	Rabbit
Clonality:	Polyclonal
Conjugate:	This RCHY1 antibody is un-conjugated
Application:	Western Blotting (WB)

Product Details

Immunogen:	Synthetic peptide located between aa36-85 of human RCHY1 (Q96PM5). Percent identity by BLAST analysis: Human, Chimpanzee, Gorilla, Gibbon, Monkey, Galago, Marmoset, Sheep, Elephant, Panda, Bovine, Rabbit, Horse (100%), Mouse, Hamster, Bat, Pig, Opossum (92%), Rat (85%), Platypus (84%). Type of Immunogen: Synthetic peptide
Specificity:	Human RCHY1 / PIRH2
Predicted Reactivity:	Percent identity by BLAST analysis: Human, Sheep, Bovine, Rabbit, Horse (100%) Mouse (92%) Rat (85%).
Purification:	Immunoaffinity purified

Target Details

Target:	RCHY1
Alternative Name:	RCHY1 / PIRH2 (RCHY1 Products)
Background:	Name/Gene ID: RCHY1 Synonyms: RCHY1, ARNIP, CHIMP, HARNIP, HPirh2, PIRH2E, PIRH2, PIRH2F, PRO1996, RING finger protein 199, Zinc finger protein 363, ZNF363, p53-induced RING-H2 protein, RNF199
Gene ID:	25898
UniProt:	Q96PM5

Application Details

Application Notes:	Approved: WB (0.2 - 1 µg/mL) Usage: Western Blot: Suggested dilution at 1 µg/mL in 5 % skim milk / PBS buffer, and HRP conjugated anti-Rabbit IgG should be diluted in 1: 50,000 - 100,000 as secondary antibody.
Comment:	Target Species of Antibody: Human
Restrictions:	For Research Use only

Handling

Format:	Lyophilized
Reconstitution:	Distilled water
Concentration:	Lot specific
Buffer:	Lyophilized from PBS with 2 % sucrose
Handling Advice:	Avoid repeat freeze-thaw cycles.
Storage:	4 °C, -20 °C
Storage Comment:	Long term: -20°C, the use of 50% glycerol is recommended if storing aliquots in -20°C for long term use (up to 1 year) Short term (less than 1 week): 4°C. Avoid freeze-thaw cycles.

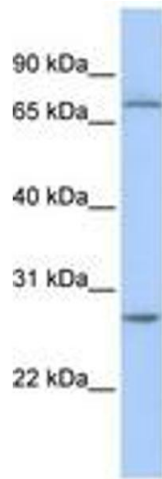


Image 1.