



[Go to Product page](#)

Datasheet for ABIN6743140
anti-RFPL4B antibody (AA 151-200)

1 Image

Overview

Quantity:	100 µL
Target:	RFPL4B
Binding Specificity:	AA 151-200
Reactivity:	Human
Host:	Rabbit
Clonality:	Polyclonal
Conjugate:	This RFPL4B antibody is un-conjugated
Application:	Western Blotting (WB)

Product Details

Immunogen:	Synthetic peptide located between aa151-200 of human RFPL4B (Q6ZWI9, NP_001013756). Percent identity by BLAST analysis: Human (100%), Gorilla (85%). Type of Immunogen: Synthetic peptide
Specificity:	Human RFPL4B
Predicted Reactivity:	Percent identity by BLAST analysis: Human (100%).
Purification:	Immunoaffinity purified

Target Details

Target:	RFPL4B
Alternative Name:	RFPL4B (RFPL4B Products)

Target Details

Background:	Name/Gene ID: RFPL4B Synonyms: RFPL4B, RING finger protein 211, RNF211, Ret finger protein-like 4B
Gene ID:	442247
NCBI Accession:	NP_001013756
UniProt:	Q6ZWI9

Application Details

Application Notes:	Approved: WB (0.2 - 1 µg/mL) Usage: Western Blot: Suggested dilution at 1 µg/mL in 5 % skim milk / PBS buffer, and HRP conjugated anti-Rabbit IgG should be diluted in 1: 50,000 - 100,000 as secondary antibody.
Comment:	Target Species of Antibody: Human
Restrictions:	For Research Use only

Handling

Format:	Lyophilized
Reconstitution:	Distilled water
Concentration:	Lot specific
Buffer:	Lyophilized from PBS with 2 % sucrose
Handling Advice:	Avoid repeat freeze-thaw cycles.
Storage:	4 °C, -20 °C
Storage Comment:	Long term: -20°C, the use of 50% glycerol is recommended if storing aliquots in -20°C for long term use (up to 1 year) Short term (less than 1 week): 4°C. Avoid freeze-thaw cycles.

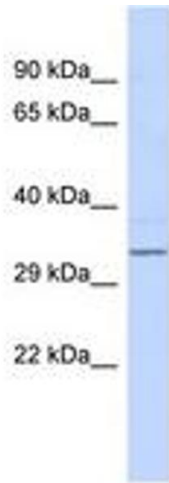


Image 1.