

Datasheet for ABIN6743145  
**anti-UBE2E1 antibody (AA 71-120)**



[Go to Product page](#)

1 Image

Overview

Quantity:	100 µL
Target:	UBE2E1
Binding Specificity:	AA 71-120
Reactivity:	Human, Mouse, Rabbit, Dog, Guinea Pig, Rat, Horse, Monkey, Drosophila melanogaster, Hamster, Xenopus laevis, Bat, Chicken, Pig
Host:	Rabbit
Clonality:	Polyclonal
Conjugate:	This UBE2E1 antibody is un-conjugated
Application:	Western Blotting (WB)

Product Details

Immunogen:	Synthetic peptide located between aa71-120 of human UBE2E1 (P51965, NP_003332). Percent identity by BLAST analysis: Human, Chimpanzee, Gorilla, Gibbon, Monkey, Galago, Marmoset, Mouse, Rat, Hamster, Elephant, Panda, Dog, Bat, Rabbit, Horse, Pig, Opossum, Guinea pig, Zebra finch, Chicken, Platypus, Xenopus, Pike, Sea squirt, Drosophila, Beetle (100%), Bovine, Turkey, Trout, Salmon, Smelt, Stickleback, Zebrafish (92%), Orangutan, Frog, Catfish, Rice, Grape (84%).  Type of Immunogen: Synthetic peptide
Specificity:	Human UBE2E1 / UBCH6
Predicted Reactivity:	Percent identity by BLAST analysis: Human, Mouse, Dog, Chicken, Xenopus (100%) Bovine, Pig, Zebrafish (92%).

## Product Details

---

Purification: Immunoaffinity purified

## Target Details

---

Target: UBE2E1

Alternative Name: UBE2E1 / UBCH6 ([UBE2E1 Products](#))

Background: Name/Gene ID: UBE2E1

Synonyms: UBE2E1, UBCH6, Ubiquitin-protein ligase E1, Ubiquitin carrier protein E1

Gene ID: 7324

NCBI Accession: [NP\\_003332](#)

UniProt: [P51965](#)

Pathways: [Ubiquitin Proteasome Pathway](#)

## Application Details

---

Application Notes: Approved: WB (0.2 - 1 µg/mL)

Usage: Western Blot: Suggested dilution at 1 µg/mL in 5 % skim milk / PBS buffer, and HRP conjugated anti-Rabbit IgG should be diluted in 1: 50,000 - 100,000 as secondary antibody.

Comment: Target Species of Antibody: Human

Restrictions: For Research Use only

## Handling

---

Format: Lyophilized

Reconstitution: Distilled water

Concentration: Lot specific

Buffer: Lyophilized from PBS with 2 % sucrose

Handling Advice: Avoid repeat freeze-thaw cycles.

Storage: 4 °C, -20 °C

Storage Comment: Long term: -20°C, the use of 50% glycerol is recommended if storing aliquots in -20°C for long term use (up to 1 year)

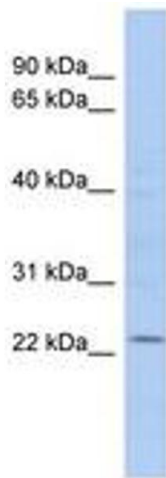
## Handling

---

Short term (less than 1 week): 4°C. Avoid freeze-thaw cycles.

## Images

---



**Image 1.**