



[Go to Product page](#)

Datasheet for ABIN6743146  
**anti-NEURL antibody (AA 107-156)**

1 Image

Overview

|                      |  |
|----------------------|--|
| Quantity:            | 100 µL   |
| Target:              | NEURL  |
| Binding Specificity: | AA 107-156   |
| Reactivity:          | Human, Mouse, Rat, Monkey, Cow, Dog, Guinea Pig, Horse, Rabbit, Bat, Pig |
| Host:                | Rabbit   |
| Clonality:           | Polyclonal   |
| Conjugate:           | This NEURL antibody is un-conjugated                                     |
| Application:         | Western Blotting (WB)  |

Product Details

|                       |  |
|-----------------------|--|
| Immunogen:            | Synthetic peptide located between aa107-156 of human NEURL (O76050, NP_004201). Percent identity by BLAST analysis: Human, Gorilla, Gibbon, Monkey, Galago, Marmoset, Mouse, Rat, Elephant, Panda, Dog, Bovine, Bat, Rabbit, Horse, Pig, Guinea pig (100%), Zebrafish (92%), Turkey, Zebra finch, Chicken, Platypus, Xenopus (85%), Opossum (84%).<br><br>Type of Immunogen: Synthetic peptide |
| Specificity:          | Human NEURL  |
| Predicted Reactivity: | Percent identity by BLAST analysis: Mouse, Rat, Dog, Bovine, Rabbit, Horse, Pig, Guinea pig (100%) Zebrafish (92%) Chicken, Xenopus (85%).   |
| Purification:         | Immunoaffinity purified  |

## Target Details

---

|                   |   |
|-------------------|---|
| Target:           | NEURL   |
| Alternative Name: | NEURL1 / NEURL ( <a href="#">NEURL Products</a> )   |
| Background:       | Name/Gene ID: NEURL1<br><br>Synonyms: NEURL1, H-neuralized 1, Neu, Neu-1, Neuralized-like (Drosophila), Neuralized-like protein 1A, NEURL, RNF67, RING finger protein 67, BA416N2.1, H-neu, Neuralized (Drosophila)-like, NEURL1A |
| Gene ID:          | 9148  |
| NCBI Accession:   | <a href="#">NP_004201</a>   |
| UniProt:          | <a href="#">O76050</a>  |
| Pathways:         | <a href="#">Notch Signaling</a> , <a href="#">EGFR Signaling Pathway</a>  |

## Application Details

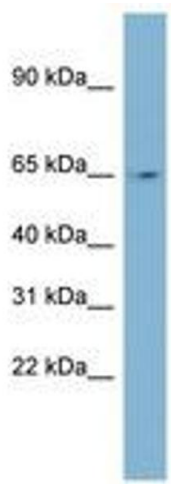
---

|                    |  |
|--------------------|--|
| Application Notes: | Approved: WB (0.2 - 1 µg/mL)<br><br>Usage: Western Blot: Suggested dilution at 1 µg/mL in 5 % skim milk / PBS buffer, and HRP conjugated anti-Rabbit IgG should be diluted in 1: 50,000 - 100,000 as secondary antibody. |
| Comment:           | Target Species of Antibody: Human  |
| Restrictions:      | For Research Use only  |

## Handling

---

|                  |   |
|------------------|---|
| Format:          | Lyophilized   |
| Reconstitution:  | Distilled water   |
| Concentration:   | Lot specific  |
| Buffer:          | Lyophilized from PBS with 2 % sucrose   |
| Handling Advice: | Avoid repeat freeze-thaw cycles.  |
| Storage:         | 4 °C, -20 °C  |
| Storage Comment: | Long term: -20°C, the use of 50% glycerol is recommended if storing aliquots in -20°C for long term use (up to 1 year)<br><br>Short term (less than 1 week): 4°C. Avoid freeze-thaw cycles. |



**Image 1.**