



[Go to Product page](#)

Datasheet for ABIN6743153  
**anti-RBBP6 antibody (AA 395-444)**

1 Image

Overview

Quantity:	100 µL
Target:	RBBP6
Binding Specificity:	AA 395-444
Reactivity:	Human, Mouse, Rat, Pig, Cow, Monkey, Bat
Host:	Rabbit
Clonality:	Polyclonal
Conjugate:	This RBBP6 antibody is un-conjugated
Application:	Western Blotting (WB)

Product Details

Immunogen:	Synthetic peptide located between aa395-444 of human RBBP6 (Q7Z6E9, NP_008841). Percent identity by BLAST analysis: Human, Chimpanzee, Gorilla, Gibbon, Monkey, Galago, Marmoset, Mouse, Rat, Elephant, Bovine, Bat (100%), Panda, Dog, Rabbit (92%), Pig (85%).  Type of Immunogen: Synthetic peptide
Specificity:	Human RBBP6
Predicted Reactivity:	Percent identity by BLAST analysis: Human, Mouse, Rat, Bovine (100%) Dog, Rabbit (92%) Pig (85%).
Purification:	Immunoaffinity purified

## Target Details

---

Target:	RBBP6
Alternative Name:	RBBP6 ( <a href="#">RBBP6 Products</a> )
Background:	Name/Gene ID: RBBP6  Synonyms: RBBP6, p2P-R, PACT, RBQ1, MY038, p2PR, Protein P2P-R, RB-binding Q-protein 1, RBQ-1, SNAMA
Gene ID:	5930
NCBI Accession:	<a href="#">NP_008841</a>
UniProt:	<a href="#">Q7Z6E9</a>
Pathways:	<a href="#">Regulatory RNA Pathways</a>

## Application Details

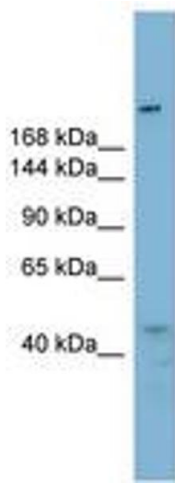
---

Application Notes:	Approved: WB (0.2 - 1 µg/mL)  Usage: Western Blot: Suggested dilution at 1 µg/mL in 5 % skim milk / PBS buffer, and HRP conjugated anti-Rabbit IgG should be diluted in 1: 50,000 - 100,000 as secondary antibody.
Comment:	Target Species of Antibody: Human
Restrictions:	For Research Use only

## Handling

---

Format:	Lyophilized
Reconstitution:	Distilled water
Concentration:	Lot specific
Buffer:	Lyophilized from PBS with 2 % sucrose
Handling Advice:	Avoid repeat freeze-thaw cycles.
Storage:	4 °C,-20 °C
Storage Comment:	Long term: -20°C, the use of 50% glycerol is recommended if storing aliquots in -20°C for long term use (up to 1 year)  Short term (less than 1 week): 4°C. Avoid freeze-thaw cycles.



**Image 1.**