



[Go to Product page](#)

Datasheet for ABIN6743159

## anti-F-Box Protein 3 antibody (AA 35-84)

### 1 Image

#### Overview

Quantity:	100 µL
Target:	F-Box Protein 3 (FBXO3)
Binding Specificity:	AA 35-84
Reactivity:	Human, Cow, Dog, Guinea Pig, Horse, Rabbit, Bat, Monkey, Pig
Host:	Rabbit
Clonality:	Polyclonal
Conjugate:	This F-Box Protein 3 antibody is un-conjugated
Application:	Western Blotting (WB)

#### Product Details

Immunogen:	Synthetic peptide located between aa35-84 of human FBXO3 (Q9UK99, NP_208385). Percent identity by BLAST analysis: Human, Chimpanzee, Gorilla, Orangutan, Gibbon, Monkey, Galago, Marmoset, Elephant, Dog, Bovine, Bat, Rabbit, Horse, Pig, Guinea pig (100%), Mouse, Rat, Turkey, Chicken, Platypus (92%), Zebra finch (91%), Opossum (85%).  Type of Immunogen: Synthetic peptide
Specificity:	Human FBXO3
Predicted Reactivity:	Percent identity by BLAST analysis: Human, Dog, Horse, Pig (100%) Mouse, Chicken (92%).
Purification:	Immunoaffinity purified

## Target Details

---

Target:	F-Box Protein 3 (FBXO3)
Alternative Name:	FBXO3 ( <a href="#">FBXO3 Products</a> )
Background:	Name/Gene ID: FBXO3 Family: F-Box  Synonyms: FBXO3, F-box protein 3, F-box protein FBX3, F-box only protein 3, FBA, FBX3
Gene ID:	26273
NCBI Accession:	<a href="#">NP_208385</a>
UniProt:	<a href="#">Q9UK99</a>

## Application Details

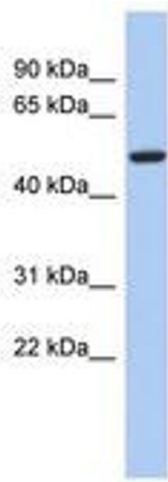
---

Application Notes:	Approved: WB (0.2 - 1 µg/mL)  Usage: Western Blot: Suggested dilution at 1 µg/mL in 5 % skim milk / PBS buffer, and HRP conjugated anti-Rabbit IgG should be diluted in 1: 50,000 - 100,000 as secondary antibody.
Comment:	Target Species of Antibody: Human
Restrictions:	For Research Use only

## Handling

---

Format:	Lyophilized
Reconstitution:	Distilled water
Concentration:	Lot specific
Buffer:	Lyophilized from PBS with 2 % sucrose
Handling Advice:	Avoid repeat freeze-thaw cycles.
Storage:	4 °C, -20 °C
Storage Comment:	Long term: -20°C, the use of 50% glycerol is recommended if storing aliquots in -20°C for long term use (up to 1 year) Short term (less than 1 week): 4°C. Avoid freeze-thaw cycles.



**Image 1.**