



[Go to Product page](#)

Datasheet for ABIN6743161  
**anti-MYLIP antibody (AA 360-409)**

1 Image

Overview

Quantity:	100 µL
Target:	MYLIP
Binding Specificity:	AA 360-409
Reactivity:	Human, Mouse, Rat, Bat, Pig
Host:	Rabbit
Clonality:	Polyclonal
Conjugate:	This MYLIP antibody is un-conjugated
Application:	Western Blotting (WB)

Product Details

Immunogen:	Synthetic peptide located between aa360-409 of human MYLIP (Q8WY64, NP_037394). Percent identity by BLAST analysis: Human, Chimpanzee, Gorilla, Mouse, Rat, Bat (100%), Gibbon, Galago, Marmoset, Dog, Bovine, Rabbit, Horse, Guinea pig (92%), Elephant, Pig, Opossum, Turkey, Zebra finch, Chicken, Lizard, Xenopus (85%).  Type of Immunogen: Synthetic peptide
Specificity:	Human MYLIP
Predicted Reactivity:	Percent identity by BLAST analysis: Human, Mouse, Rat (100%) Dog, Bovine, Rabbit, Horse, Guinea pig (92%) Pig, Chicken (85%).
Purification:	Immunoaffinity purified

## Target Details

---

Target:	MYLIP
Alternative Name:	MYLIP / IDOL ( <a href="#">MYLIP Products</a> )
Background:	Name/Gene ID: MYLIP  Synonyms: MYLIP
Gene ID:	29116
NCBI Accession:	<a href="#">NP_037394</a>
UniProt:	<a href="#">Q8WY64</a>

## Application Details

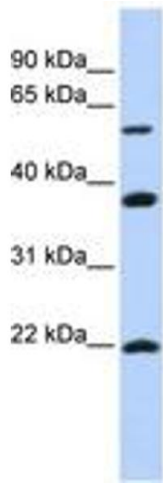
---

Application Notes:	Approved: WB (0.2 - 1 µg/mL)  Usage: Western Blot: Suggested dilution at 1 µg/mL in 5 % skim milk / PBS buffer, and HRP conjugated anti-Rabbit IgG should be diluted in 1: 50,000 - 100,000 as secondary antibody.
Comment:	Target Species of Antibody: Human
Restrictions:	For Research Use only

## Handling

---

Format:	Lyophilized
Reconstitution:	Distilled water
Concentration:	Lot specific
Buffer:	Lyophilized from PBS with 2 % sucrose
Handling Advice:	Avoid repeat freeze-thaw cycles.
Storage:	4 °C, -20 °C
Storage Comment:	Long term: -20°C, the use of 50% glycerol is recommended if storing aliquots in -20°C for long term use (up to 1 year)  Short term (less than 1 week): 4°C. Avoid freeze-thaw cycles.



**Image 1.**