



[Go to Product page](#)

Datasheet for ABIN6743162  
**anti-PDZRN4 antibody (AA 107-156)**

1 Image

Overview

|                      |  |
|----------------------|--|
| Quantity:            | 100 µL   |
| Target:              | PDZRN4   |
| Binding Specificity: | AA 107-156   |
| Reactivity:          | Human, Horse, Dog, Guinea Pig, Mouse, Monkey, Bat, Pig |
| Host:                | Rabbit   |
| Clonality:           | Polyclonal   |
| Conjugate:           | This PDZRN4 antibody is un-conjugated                  |
| Application:         | Western Blotting (WB)                                  |

Product Details

|                       |  |
|-----------------------|--|
| Immunogen:            | Synthetic peptide located between aa107-156 of human PDZRN4 (B4DG65, NP_037509).<br>Percent identity by BLAST analysis: Human, Chimpanzee, Gorilla, Gibbon, Monkey, Galago, Marmoset, Elephant, Bat, Horse, Pig, Guinea pig, Platypus (100%), Rat, Chicken, Lizard (92%), Mouse, Dog, Xenopus (85%).<br><br>Type of Immunogen: Synthetic peptide |
| Specificity:          | Human PDZRN4   |
| Predicted Reactivity: | Percent identity by BLAST analysis: Human, Horse, Pig, Guinea pig (100%) Rat, Chicken (92%), Mouse, Dog (85%).   |
| Purification:         | Immunoaffinity purified  |

## Target Details

---

|                   |   |
|-------------------|---|
| Target:           | PDZRN4  |
| Alternative Name: | PDZRN4 ( <a href="#">PDZRN4 Products</a> )  |
| Background:       | Name/Gene ID: PDZRN4<br><br>Synonyms: PDZRN4, IMAGE5767589, Ligand of Numb protein X 4, LNX4, SAMCAP3L, SEMACAP3-like protein, SEMCAP3L |
| Gene ID:          | 29951   |
| NCBI Accession:   | <a href="#">NP_037509</a>   |
| UniProt:          | <a href="#">Q6ZMN7</a>  |

## Application Details

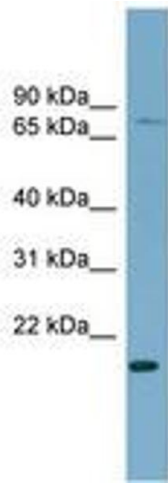
---

|                    |  |
|--------------------|--|
| Application Notes: | Approved: WB (0.2 - 1 µg/mL)<br><br>Usage: Western Blot: Suggested dilution at 1 µg/mL in 5 % skim milk / PBS buffer, and HRP conjugated anti-Rabbit IgG should be diluted in 1: 50,000 - 100,000 as secondary antibody. |
| Comment:           | Target Species of Antibody: Human  |
| Restrictions:      | For Research Use only  |

## Handling

---

|                  |   |
|------------------|---|
| Format:          | Lyophilized   |
| Reconstitution:  | Distilled water   |
| Concentration:   | Lot specific  |
| Buffer:          | Lyophilized from PBS with 2 % sucrose   |
| Handling Advice: | Avoid repeat freeze-thaw cycles.  |
| Storage:         | 4 °C, -20 °C  |
| Storage Comment: | Long term: -20°C, the use of 50% glycerol is recommended if storing aliquots in -20°C for long term use (up to 1 year)<br><br>Short term (less than 1 week): 4°C. Avoid freeze-thaw cycles. |



**Image 1.**