



Datasheet for ABIN6743165
anti-HERC6 antibody (AA 143-192)



[Go to Product page](#)

1 Image

Overview

Quantity:	100 µL
Target:	HERC6
Binding Specificity:	AA 143-192
Reactivity:	Human, Cow, Horse, Pig, Rabbit, Bat, Monkey
Host:	Rabbit
Clonality:	Polyclonal
Conjugate:	This HERC6 antibody is un-conjugated
Application:	Western Blotting (WB)

Product Details

Immunogen:	Synthetic peptide located between aa143-192 of human HERC6 (Q8IVU3, NP_060382). Percent identity by BLAST analysis: Human, Chimpanzee, Gorilla, Orangutan, Gibbon, Monkey, Galago, Marmoset, Elephant, Bovine, Bat, Rabbit, Horse, Pig, Opossum, Lizard (100%), Mouse, Rat, Panda, Dog, Guinea pig, Turkey, Zebra finch, Chicken (92%). Type of Immunogen: Synthetic peptide
Specificity:	Human HERC6
Predicted Reactivity:	Percent identity by BLAST analysis: Human, Bovine, Rabbit (100%) Dog, Horse, Guinea pig (92%).
Purification:	Immunoaffinity purified

Target Details

Target: HERC6

Alternative Name: HERC6 ([HERC6 Products](#))

Background: Name/Gene ID: HERC6

Synonyms: HERC6, Hect domain and RLD 6, Potential ubiquitin ligase

Gene ID: 55008

NCBI Accession: [NP_060382](#)

UniProt: [Q8IVU3](#)

Application Details

Application Notes: Approved: WB (0.2 - 1 µg/mL)

Usage: Western Blot: Suggested dilution at 1 µg/mL in 5 % skim milk / PBS buffer, and HRP conjugated anti-Rabbit IgG should be diluted in 1: 50,000 - 100,000 as secondary antibody.

Comment: Target Species of Antibody: Human

Restrictions: For Research Use only

Handling

Format: Lyophilized

Reconstitution: Distilled water

Concentration: Lot specific

Buffer: Lyophilized from PBS with 2 % sucrose

Handling Advice: Avoid repeat freeze-thaw cycles.

Storage: 4 °C, -20 °C

Storage Comment: Long term: -20°C, the use of 50% glycerol is recommended if storing aliquots in -20°C for long term use (up to 1 year)

Short term (less than 1 week): 4°C. Avoid freeze-thaw cycles.

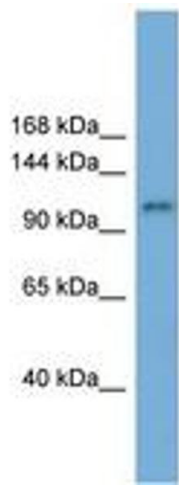


Image 1.