



[Go to Product page](#)

Datasheet for ABIN6743180
anti-RNF144B antibody (AA 215-264)

1 Image

Overview

Quantity:	100 µL
Target:	RNF144B
Binding Specificity:	AA 215-264
Reactivity:	Human, Mouse, Rat, Cow, Dog, Guinea Pig, Horse, Rabbit, Bat, Chicken, Monkey, Pig, Xenopus laevis
Host:	Rabbit
Clonality:	Polyclonal
Conjugate:	This RNF144B antibody is un-conjugated
Application:	Western Blotting (WB)

Product Details

Immunogen:	Synthetic peptide located between aa215-264 of human RNF144B (Q7Z419, NP_877434). Percent identity by BLAST analysis: Human, Chimpanzee, Gorilla, Gibbon, Monkey, Galago, Marmoset, Mouse, Rat, Elephant, Panda, Dog, Bovine, Bat, Rabbit, Horse, Pig, Opossum, Guinea pig, Turkey, Zebra finch, Chicken, Platypus, Lizard, Xenopus (100%), Stickleback (92%). Type of Immunogen: Synthetic peptide
Specificity:	Human RNF144B
Predicted Reactivity:	Percent identity by BLAST analysis: Human, Rat, Dog, Horse, Chicken (100%).
Purification:	Immunoaffinity purified

Target Details

Target:	RNF144B
Alternative Name:	RNF144B (RNF144B Products)
Background:	Name/Gene ID: RNF144B Synonyms: RNF144B, BA528A10.3, IBRDC2, p53RFP, IBR domain containing 2, PIR2, Ring finger protein 144B
Gene ID:	255488
NCBI Accession:	NP_877434
UniProt:	Q7Z419

Application Details

Application Notes:	Approved: WB (0.2 - 1 µg/mL) Usage: Western Blot: Suggested dilution at 1 µg/mL in 5 % skim milk / PBS buffer, and HRP conjugated anti-Rabbit IgG should be diluted in 1: 50,000 - 100,000 as secondary antibody.
Comment:	Target Species of Antibody: Human
Restrictions:	For Research Use only

Handling

Format:	Lyophilized
Reconstitution:	Distilled water
Concentration:	Lot specific
Buffer:	Lyophilized from PBS with 2 % sucrose
Handling Advice:	Avoid repeat freeze-thaw cycles.
Storage:	4 °C, -20 °C
Storage Comment:	Long term: -20°C, the use of 50% glycerol is recommended if storing aliquots in -20°C for long term use (up to 1 year) Short term (less than 1 week): 4°C. Avoid freeze-thaw cycles.

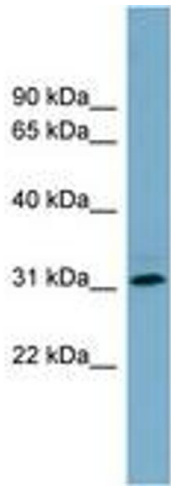


Image 1.