



[Go to Product page](#)

Datasheet for ABIN6743188

## anti-TMEM176A antibody (AA 143-192)

### 1 Image

#### Overview

Quantity:	100 µL
Target:	TMEM176A
Binding Specificity:	AA 143-192
Reactivity:	Human
Host:	Rabbit
Clonality:	Polyclonal
Conjugate:	This TMEM176A antibody is un-conjugated
Application:	Western Blotting (WB)

#### Product Details

Immunogen:	Synthetic peptide located between aa143-192 of human TMEM176A (Q96HP8, NP_060957). Percent identity by BLAST analysis: Human, Gorilla (100%), Marmoset (92%), Gibbon (84%).  Type of Immunogen: Synthetic peptide
Specificity:	Human TMEM176A
Predicted Reactivity:	Percent identity by BLAST analysis: Human (100%).
Purification:	Immunoaffinity purified

#### Target Details

Target:	TMEM176A
Alternative Name:	TMEM176A / HCA112 ( <a href="#">TMEM176A Products</a> )

## Target Details

---

Background:	Name/Gene ID: TMEM176A  Synonyms: TMEM176A, GS188, Likelly ortholog of mouse GS188, HCA112, Transmembrane protein 176A
Gene ID:	55365
NCBI Accession:	<a href="#">NP_060957</a>
UniProt:	<a href="#">Q96HP8</a>

## Application Details

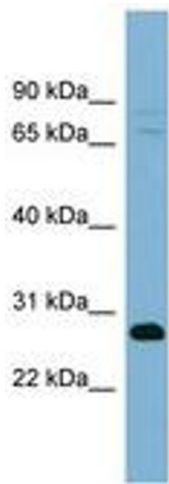
---

Application Notes:	Approved: WB (0.2 - 1 µg/mL)  Usage: Western Blot: Suggested dilution at 1 µg/mL in 5 % skim milk / PBS buffer, and HRP conjugated anti-Rabbit IgG should be diluted in 1: 50,000 - 100,000 as secondary antibody.
Comment:	Target Species of Antibody: Human
Restrictions:	For Research Use only

## Handling

---

Format:	Lyophilized
Reconstitution:	Distilled water
Concentration:	Lot specific
Buffer:	Lyophilized from PBS with 2 % sucrose
Handling Advice:	Avoid repeat freeze-thaw cycles.
Storage:	4 °C,-20 °C
Storage Comment:	Long term: -20°C, the use of 50% glycerol is recommended if storing aliquots in -20°C for long term use (up to 1 year)  Short term (less than 1 week): 4°C. Avoid freeze-thaw cycles.



**Image 1.**