



Datasheet for ABIN6743196
anti-SNTB1 antibody (AA 71-120)



[Go to Product page](#)

1 Image

Overview

Quantity:	100 µL
Target:	SNTB1
Binding Specificity:	AA 71-120
Reactivity:	Mouse, Human, Rat, Rabbit, Monkey
Host:	Rabbit
Clonality:	Polyclonal
Conjugate:	This SNTB1 antibody is un-conjugated
Application:	Western Blotting (WB)

Product Details

Immunogen:	Synthetic peptide located between aa71-120 of human SNTB1 (Q13884, NP_066301). Percent identity by BLAST analysis: Human, Chimpanzee, Gorilla, Gibbon, Monkey, Galago, Marmoset, Mouse, Rat, Rabbit (100%), Horse (92%), Panda, Opossum (85%). Type of Immunogen: Synthetic peptide
Specificity:	Human SNTB1
Predicted Reactivity:	Percent identity by BLAST analysis: Human, Mouse, Rat, Rabbit (100%) Horse (92%).
Purification:	Immunoaffinity purified

Target Details

Target:	SNTB1
---------	-------

Target Details

Alternative Name: [SNTB1 / A1B \(SNTB1 Products\)](#)

Background: Name/Gene ID: SNTB1

Synonyms: SNTB1, 59-DAP, A1B, Beta-1-syntrophin, Beta1-syntrophin, BSYN2, DAPA1B, SNT2B1, Tax interaction protein 43, SNT2, Syntrophin-2, TIP-43

Gene ID: 6641

NCBI Accession: [NP_066301](#)

UniProt: [Q13884](#)

Application Details

Application Notes: Approved: WB (0.2 - 1 µg/mL)

Usage: Western Blot: Suggested dilution at 1 µg/mL in 5 % skim milk / PBS buffer, and HRP conjugated anti-Rabbit IgG should be diluted in 1: 50,000 - 100,000 as secondary antibody.

Comment: Target Species of Antibody: Human

Restrictions: For Research Use only

Handling

Format: Lyophilized

Reconstitution: Distilled water

Concentration: Lot specific

Buffer: Lyophilized from PBS with 2 % sucrose

Handling Advice: Avoid repeat freeze-thaw cycles.

Storage: 4 °C, -20 °C

Storage Comment: Long term: -20°C, the use of 50% glycerol is recommended if storing aliquots in -20°C for long term use (up to 1 year)

Short term (less than 1 week): 4°C. Avoid freeze-thaw cycles.

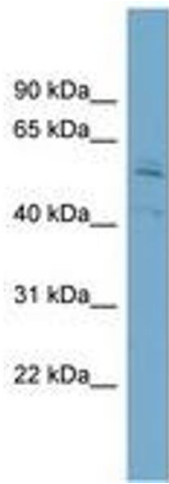


Image 1.