

Datasheet for ABIN6743198
anti-SLC12A3 antibody (C-Term)



[Go to Product page](#)

1 Image

Overview

Quantity:	100 µL
Target:	SLC12A3
Binding Specificity:	C-Term
Reactivity:	Human, Dog, Guinea Pig, Horse, Rabbit, Bat, Chicken, Monkey
Host:	Rabbit
Clonality:	Polyclonal
Conjugate:	This SLC12A3 antibody is un-conjugated
Application:	Western Blotting (WB)

Product Details

Immunogen:	Synthetic peptide from C-Terminus of human SLC12A3 (P55017-2, NP_000330). Percent identity by BLAST analysis: Human, Chimpanzee, Gorilla, Orangutan, Gibbon, Monkey, Galago, Marmoset, Elephant, Dog, Bat, Rabbit, Horse, Guinea pig, Turkey, Chicken (100%), Mouse, Opossum, Platypus (92%), Rat, Zebra finch, Trout, Salmon, Stickleback, Zebrafish (85%). Type of Immunogen: Synthetic peptide
Specificity:	Human SLC12A3
Predicted Reactivity:	Percent identity by BLAST analysis: Dog, Horse, Guinea pig, Chicken (100%) Mouse (92%) Rat, Zebrafish (85%).
Purification:	Immunoaffinity purified

Target Details

Target:	SLC12A3
Alternative Name:	SLC12A3 / TSC (SLC12A3 Products)
Background:	Name/Gene ID: SLC12A3 Subfamily: Cation:chloride symporter Family: Transporter Synonyms: SLC12A3, NCCT, NCC, Na-Cl symporter, Na-Cl cotransporter, TSC
Gene ID:	6559
NCBI Accession:	NP_000330
UniProt:	P55017

Application Details

Application Notes:	Approved: WB (0.2 - 1 µg/mL) Usage: Western Blot: Suggested dilution at 1 µg/mL in 5 % skim milk / PBS buffer, and HRP conjugated anti-Rabbit IgG should be diluted in 1: 50,000 - 100,000 as secondary antibody.
Comment:	Target Species of Antibody: Human
Restrictions:	For Research Use only

Handling

Format:	Lyophilized
Reconstitution:	Distilled water
Concentration:	Lot specific
Buffer:	Lyophilized from PBS with 2 % sucrose
Handling Advice:	Avoid repeat freeze-thaw cycles.
Storage:	4 °C,-20 °C
Storage Comment:	Long term: -20°C, the use of 50% glycerol is recommended if storing aliquots in -20°C for long term use (up to 1 year) Short term (less than 1 week): 4°C. Avoid freeze-thaw cycles.

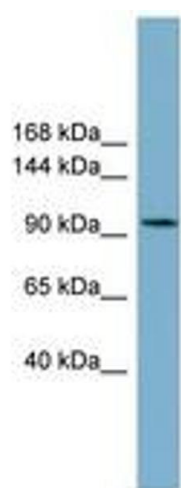


Image 1.