

Datasheet for ABIN6743199
anti-SLC3A1 antibody (AA 179-228)[Go to Product page](#)

1 Image

Overview

Quantity:	100 µL
Target:	SLC3A1
Binding Specificity:	AA 179-228
Reactivity:	Human, Mouse, Rat, Horse, Pig, Rabbit, Cow, Dog, Zebrafish (Danio rerio), Guinea Pig, Monkey, Bat
Host:	Rabbit
Clonality:	Polyclonal
Conjugate:	This SLC3A1 antibody is un-conjugated
Application:	Western Blotting (WB)

Product Details

Immunogen:	<p>Synthetic peptide located between aa179-228 of human SLC3A1 (Q07837, NP_000332).</p> <p>Percent identity by BLAST analysis: Human, Chimpanzee, Gorilla, Gibbon, Galago, Marmoset, Mouse, Rat, Elephant, Panda, Dog, Bovine, Bat, Rabbit, Horse, Pig (100%), Opossum, Salmon (92%), Guinea pig, Zebra finch, Chicken, Xenopus, Zebrafish (85%), Stickleback (84%), Mosquito (83%), Drosophila (81%).</p> <p>Type of Immunogen: Synthetic peptide</p>
Specificity:	Human SLC3A1
Predicted Reactivity:	<p>Percent identity by BLAST analysis: Human, Mouse, Dog, Bovine, Rabbit, Horse, Pig (100%)</p> <p>Guinea pig, Chicken, Xenopus, Zebrafish (85%).</p>

Product Details

Purification: Immunoaffinity purified

Target Details

Target: SLC3A1

Alternative Name: SLC3A1 / ATR1 ([SLC3A1 Products](#))

Background: Name/Gene ID: SLC3A1
Subfamily: rBAT transport accessory protein
Family: Transporter

Synonyms: SLC3A1, CSNU1, D2H, Amino acid transporter 1, SLC3A1 variant B, SLC3A1 variant D, SLC3A1 variant E, NBAT, RBAT, SLC3A1 variant F, SLC3A1 variant G, ATR1, SLC3A1 variant C

Gene ID: 6519

NCBI Accession: [NP_000332](#)

UniProt: [Q07837](#)

Application Details

Application Notes: Approved: WB (0.2 - 1 µg/mL)

Usage: Western Blot: Suggested dilution at 1 µg/mL in 5 % skim milk / PBS buffer, and HRP conjugated anti-Rabbit IgG should be diluted in 1: 50,000 - 100,000 as secondary antibody.

Comment: Target Species of Antibody: Human

Restrictions: For Research Use only

Handling

Format: Lyophilized

Reconstitution: Distilled water

Concentration: Lot specific

Buffer: Lyophilized from PBS with 2 % sucrose

Handling Advice: Avoid repeat freeze-thaw cycles.

Storage: 4 °C, -20 °C

Handling

Storage Comment: Long term: -20°C, the use of 50% glycerol is recommended if storing aliquots in -20°C for long term use (up to 1 year)

Short term (less than 1 week): 4°C. Avoid freeze-thaw cycles.

Images

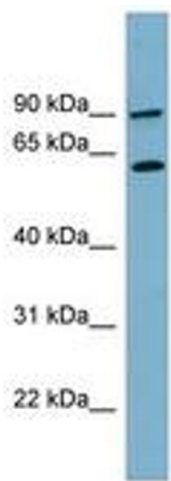


Image 1.