

Datasheet for ABIN6743211
anti-SLC25A12 antibody (C-Term)[Go to Product page](#)

1 Image

Overview

Quantity:	100 µL
Target:	SLC25A12 (Slc25a12)
Binding Specificity:	C-Term
Reactivity:	Human, Mouse, Rat, Monkey, Pig, Rabbit, Cow, Dog, Bat
Host:	Rabbit
Clonality:	Polyclonal
Conjugate:	This SLC25A12 antibody is un-conjugated
Application:	Western Blotting (WB)

Product Details

Immunogen:	Synthetic peptide from C-Terminus of human SLC25A12 (O75746, NP_003696). Percent identity by BLAST analysis: Human, Chimpanzee, Gorilla, Orangutan, Gibbon, Monkey, Galago, Marmoset, Mouse, Rat, Elephant, Dog, Bovine, Bat, Rabbit, Pig, Opossum, Platypus (100%), Horse, Guinea pig (92%), Xenopus (85%). Type of Immunogen: Synthetic peptide
Specificity:	Human SLC25A12
Predicted Reactivity:	Percent identity by BLAST analysis: Human, Dog, Bovine, Rabbit, Pig (100%) Horse, Guinea pig (92%) Xenopus (85%).
Purification:	Immunoaffinity purified

Target Details

Target:	SLC25A12 (Slc25a12)
Alternative Name:	SLC25A12 / ARALAR (Slc25a12 Products)
Background:	Name/Gene ID: SLC25A12 Subfamily: Mitochondrial carrier Family: Transporter Synonyms: SLC25A12, ARALAR, ARALAR1, AGC1, Araceli hiperlarga
Gene ID:	8604
NCBI Accession:	NP_003696
UniProt:	O75746
Pathways:	Ribonucleoside Biosynthetic Process , Dicarboxylic Acid Transport

Application Details

Application Notes:	Approved: WB (0.2 - 1 µg/mL) Usage: Western Blot: Suggested dilution at 1 µg/mL in 5 % skim milk / PBS buffer, and HRP conjugated anti-Rabbit IgG should be diluted in 1: 50,000 - 100,000 as secondary antibody.
Comment:	Target Species of Antibody: Human
Restrictions:	For Research Use only

Handling

Format:	Lyophilized
Reconstitution:	Distilled water
Concentration:	Lot specific
Buffer:	Lyophilized from PBS with 2 % sucrose
Handling Advice:	Avoid repeat freeze-thaw cycles.
Storage:	4 °C, -20 °C
Storage Comment:	Long term: -20°C, the use of 50% glycerol is recommended if storing aliquots in -20°C for long term use (up to 1 year) Short term (less than 1 week): 4°C. Avoid freeze-thaw cycles.

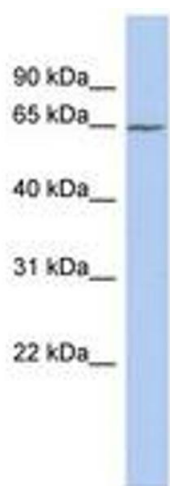


Image 1.