

Datasheet for ABIN6743216
anti-Slc25a1 antibody (AA 215-264)

1 Image

[Go to Product page](#)

Overview

Quantity:	100 µL
Target:	Slc25a1
Binding Specificity:	AA 215-264
Reactivity:	Human, Mouse, Rat, Horse, Cow, Dog, Rabbit, Guinea Pig, Monkey, Bat, Pig, Drosophila melanogaster
Host:	Rabbit
Clonality:	Polyclonal
Conjugate:	This Slc25a1 antibody is un-conjugated
Application:	Western Blotting (WB)

Product Details

Immunogen:	Synthetic peptide located between aa215-264 of human SLC25A1 (P32089, NP_005975). Percent identity by BLAST analysis: Human, Chimpanzee, Gorilla, Gibbon, Monkey, Galago, Marmoset, Mouse, Rat, Elephant, Dog, Bovine, Bat, Rabbit, Horse, Pig, Opossum, Guinea pig, Zebra finch, Platypus, Catfish, Drosophila (100%), Turkey, Chicken, Xenopus, Stickleback, Zebrafish, Blood fluke, Sea squirt (92%), Beetle (85%). Type of Immunogen: Synthetic peptide
Specificity:	Human SLC25A1
Predicted Reactivity:	Percent identity by BLAST analysis: Human, Mouse, Dog, Bovine, Rabbit, Pig, Guinea pig, Xenopus (100%) Chicken, Zebrafish (92%).

Product Details

Purification: Immunoaffinity purified

Target Details

Target: Slc25a1

Alternative Name: SLC25A1 / SEA ([Slc25a1 Products](#))

Background: Name/Gene ID: SLC25A1
Subfamily: Mitochondrial carrier
Family: Transporter

Synonyms: SLC25A1, Citrate transporter), member 1, Citrate transport protein, SLC20A3, Tricarboxylate carrier protein, CTP

Gene ID: 6576

NCBI Accession: [NP_005975](#)

UniProt: [P53007](#)

Application Details

Application Notes: Approved: WB (0.2 - 1 µg/mL)

Usage: Western Blot: Suggested dilution at 1 µg/mL in 5 % skim milk / PBS buffer, and HRP conjugated anti-Rabbit IgG should be diluted in 1: 50,000 - 100,000 as secondary antibody.

Comment: Target Species of Antibody: Human

Restrictions: For Research Use only

Handling

Format: Lyophilized

Reconstitution: Distilled water

Concentration: Lot specific

Buffer: Lyophilized from PBS with 2 % sucrose

Handling Advice: Avoid repeat freeze-thaw cycles.

Storage: 4 °C, -20 °C

Handling

Storage Comment:	Long term: -20°C, the use of 50% glycerol is recommended if storing aliquots in -20°C for long term use (up to 1 year)
	Short term (less than 1 week): 4°C. Avoid freeze-thaw cycles.

Images

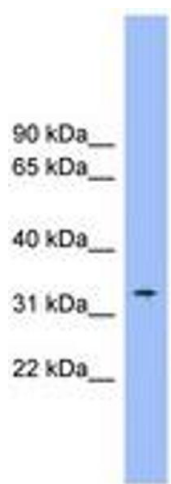


Image 1.