

Datasheet for ABIN6743217  
**anti-Slc6a14 antibody (AA 359-408)**[Go to Product page](#)

## 1 Image

## Overview

Quantity:	100 µL
Target:	Slc6a14
Binding Specificity:	AA 359-408
Reactivity:	Human, Rat, Mouse, Dog, Pig, Rabbit, Horse, Monkey
Host:	Rabbit
Clonality:	Polyclonal
Conjugate:	This Slc6a14 antibody is un-conjugated
Application:	Western Blotting (WB)

## Product Details

Immunogen:	Synthetic peptide located between aa359-408 of human SLC6A14 (Q9UN76, NP_009162). Percent identity by BLAST analysis: Human, Gorilla, Gibbon, Monkey, Galago, Marmoset, Mouse, Rat, Elephant, Panda, Dog, Rabbit, Horse, Pig, Opossum, Platypus (100%), Bovine, Bat (92%), Guinea pig (85%).  Type of Immunogen: Synthetic peptide
Specificity:	Human SLC6A14
Predicted Reactivity:	Percent identity by BLAST analysis: Mouse, Rat, Dog, Rabbit, Horse, Pig (100%) Bovine (92%).
Purification:	Immunoaffinity purified

## Target Details

Target:	Slc6a14
Alternative Name:	SLC6A14 ( <a href="#">Slc6a14 Products</a> )
Background:	Name/Gene ID: SLC6A14 Subfamily: Neurotransmitter:sodium symporter Family: Transporter  Synonyms: SLC6A14, Amino acid transporter ATB0+, Amino acid transporter B0+, BMIQ11, OBX, ATB0+
Gene ID:	11254
NCBI Accession:	<a href="#">NP_009162</a>
UniProt:	<a href="#">Q9UN76</a>

## Application Details

Application Notes:	Approved: WB (0.2 - 1 µg/mL)  Usage: Western Blot: Suggested dilution at 1 µg/mL in 5 % skim milk / PBS buffer, and HRP conjugated anti-Rabbit IgG should be diluted in 1: 50,000 - 100,000 as secondary antibody.
Comment:	Target Species of Antibody: Human
Restrictions:	For Research Use only

## Handling

Format:	Lyophilized
Reconstitution:	Distilled water
Concentration:	Lot specific
Buffer:	Lyophilized from PBS with 2 % sucrose
Handling Advice:	Avoid repeat freeze-thaw cycles.
Storage:	4 °C, -20 °C
Storage Comment:	Long term: -20°C, the use of 50% glycerol is recommended if storing aliquots in -20°C for long term use (up to 1 year) Short term (less than 1 week): 4°C. Avoid freeze-thaw cycles.

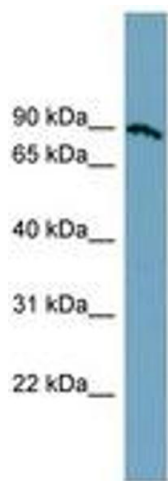


Image 1.