



[Go to Product page](#)

Datasheet for ABIN6743219  
**anti-ZIP2 antibody (AA 71-120)**

1 Image

Overview

Quantity:	100 µL
Target:	ZIP2 (Slc39a2)
Binding Specificity:	AA 71-120
Reactivity:	Human
Host:	Rabbit
Clonality:	Polyclonal
Conjugate:	This ZIP2 antibody is un-conjugated
Application:	Western Blotting (WB)

Product Details

Immunogen:	Synthetic peptide located between aa71-120 of human SLC39A2 (Q9NP94, NP_055394). Percent identity by BLAST analysis: Human, Chimpanzee, Gorilla, Gibbon (100%), Monkey, Marmoset (92%).  Type of Immunogen: Synthetic peptide
Specificity:	Human SLC39A2
Predicted Reactivity:	Percent identity by BLAST analysis:
Purification:	Immunoaffinity purified

Target Details

Target:	ZIP2 (Slc39a2)
---------	----------------

## Target Details

---

Alternative Name:	SLC39A2 / ZIP2 ( <a href="#">Slc39a2 Products</a> )
Background:	Name/Gene ID: SLC39A2 Subfamily: Zinc-iron transporter Family: Transporter  Synonyms: SLC39A2, 6A1, HZIP2, ETI-1, Zrt- and Irt-like protein 2, Zinc uptake transporter 2, ZIP2, Zinc transporter ZIP2, ZIP-2
Gene ID:	29986
NCBI Accession:	<a href="#">NP_055394</a>
UniProt:	<a href="#">Q9NP94</a>
Pathways:	<a href="#">Autophagy</a>

## Application Details

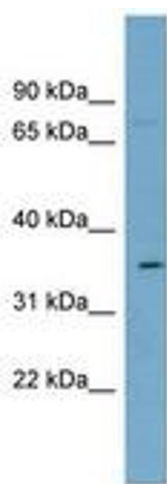
---

Application Notes:	Approved: WB (0.2 - 1 µg/mL)  Usage: Western Blot: Suggested dilution at 1 µg/mL in 5 % skim milk / PBS buffer, and HRP conjugated anti-Rabbit IgG should be diluted in 1: 50,000 - 100,000 as secondary antibody.
Comment:	Target Species of Antibody: Human
Restrictions:	For Research Use only

## Handling

---

Format:	Lyophilized
Reconstitution:	Distilled water
Concentration:	Lot specific
Buffer:	Lyophilized from PBS with 2 % sucrose
Handling Advice:	Avoid repeat freeze-thaw cycles.
Storage:	4 °C, -20 °C
Storage Comment:	Long term: -20°C, the use of 50% glycerol is recommended if storing aliquots in -20°C for long term use (up to 1 year) Short term (less than 1 week): 4°C. Avoid freeze-thaw cycles.



**Image 1.**