



[Go to Product page](#)

Datasheet for ABIN6743228

## anti-SLC39A8 antibody (AA 107-156)

### 1 Image

#### Overview

Quantity:	100 µL
Target:	SLC39A8
Binding Specificity:	AA 107-156
Reactivity:	Human, Horse
Host:	Rabbit
Clonality:	Polyclonal
Conjugate:	This SLC39A8 antibody is un-conjugated
Application:	Western Blotting (WB)

#### Product Details

Immunogen:	Synthetic peptide located between aa107-156 of human SLC39A8 (Q9C0K1, NP_071437). Percent identity by BLAST analysis: Human, Chimpanzee, Gorilla, Gibbon, Monkey (100%), Marmoset (92%), Panda (85%), Pig (84%).  Type of Immunogen: Synthetic peptide
Specificity:	Human SLC39A8 / ZIP8
Predicted Reactivity:	Percent identity by BLAST analysis: Human (100%).
Purification:	Immunoaffinity purified

#### Target Details

Target:	SLC39A8
---------	---------

## Target Details

---

Alternative Name:	SLC39A8 / ZIP8 ( <a href="#">SLC39A8 Products</a> )
Background:	Name/Gene ID: SLC39A8 Subfamily: Zinc-iron transporter Family: Transporter  Synonyms: SLC39A8, LZT-Hs6, ZIP-8, PP3105, BIGM103, ZIP8, Zrt- and Irt-like protein 8, Up-regulated by BCG-CWS, Zinc transporter ZIP8
Gene ID:	64116
NCBI Accession:	<a href="#">NP_071437</a>
UniProt:	<a href="#">Q9C0K1</a>

## Application Details

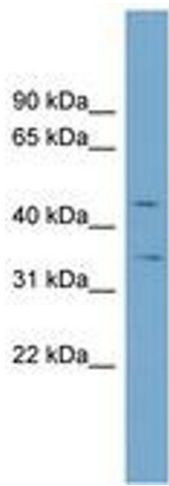
---

Application Notes:	Approved: WB (0.2 - 1 µg/mL)  Usage: Western Blot: Suggested dilution at 1 µg/mL in 5 % skim milk / PBS buffer, and HRP conjugated anti-Rabbit IgG should be diluted in 1: 50,000 - 100,000 as secondary antibody.
Comment:	Target Species of Antibody: Human
Restrictions:	For Research Use only

## Handling

---

Format:	Lyophilized
Reconstitution:	Distilled water
Concentration:	Lot specific
Buffer:	Lyophilized from PBS with 2 % sucrose
Handling Advice:	Avoid repeat freeze-thaw cycles.
Storage:	4 °C, -20 °C
Storage Comment:	Long term: -20°C, the use of 50% glycerol is recommended if storing aliquots in -20°C for long term use (up to 1 year)  Short term (less than 1 week): 4°C. Avoid freeze-thaw cycles.



**Image 1.**