

Datasheet for ABIN6743229  
**anti-SLC12A8 antibody (AA 179-228)**[Go to Product page](#)

## 1 Image

## Overview

Quantity:	100 µL
Target:	SLC12A8 (Slc12a8)
Binding Specificity:	AA 179-228
Reactivity:	Mouse, Human, Horse, Rabbit, Rat, Cow, Dog, Guinea Pig, Monkey, Bat
Host:	Rabbit
Clonality:	Polyclonal
Conjugate:	This SLC12A8 antibody is un-conjugated
Application:	Western Blotting (WB)

## Product Details

Immunogen:	Synthetic peptide located between aa179-228 of human SLC12A8 (A0AV02, NP_078904). Percent identity by BLAST analysis: Human, Chimpanzee, Gorilla, Monkey, Marmoset, Mouse, Rat, Dog, Bovine, Bat, Rabbit, Horse, Guinea pig (100%), Gibbon, Galago, Elephant (92%), Opossum (85%), Turkey, Chicken (83%).  Type of Immunogen: Synthetic peptide
Specificity:	Human SLC12A8
Predicted Reactivity:	Percent identity by BLAST analysis: Human, Mouse, Rat, Dog, Bovine, Rabbit, Horse, Guinea pig (100%) Chicken (83%).
Purification:	Immunoaffinity purified

## Target Details

Target:	SLC12A8 (Slc12a8)
Alternative Name:	SLC12A8 ( <a href="#">Slc12a8 Products</a> )
Background:	Name/Gene ID: SLC12A8 Subfamily: Cation:chloride symporter Family: Transporter  Synonyms: SLC12A8, CCC9
Gene ID:	84561
NCBI Accession:	<a href="#">NP_078904</a>
UniProt:	<a href="#">A0AV02</a>

## Application Details

Application Notes:	Approved: WB (0.2 - 1 µg/mL)  Usage: Western Blot: Suggested dilution at 1 µg/mL in 5 % skim milk / PBS buffer, and HRP conjugated anti-Rabbit IgG should be diluted in 1: 50,000 - 100,000 as secondary antibody.
Comment:	Target Species of Antibody: Human
Restrictions:	For Research Use only

## Handling

Format:	Lyophilized
Reconstitution:	Distilled water
Concentration:	Lot specific
Buffer:	Lyophilized from PBS with 2 % sucrose
Handling Advice:	Avoid repeat freeze-thaw cycles.
Storage:	4 °C,-20 °C
Storage Comment:	Long term: -20°C, the use of 50% glycerol is recommended if storing aliquots in -20°C for long term use (up to 1 year) Short term (less than 1 week): 4°C. Avoid freeze-thaw cycles.

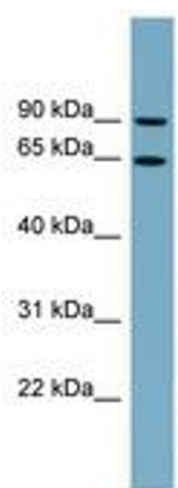


Image 1.