

Datasheet for ABIN6743230
anti-SLC25A22 antibody (AA 71-120)[Go to Product page](#)

1 Image

Overview

Quantity:	100 µL
Target:	SLC25A22
Binding Specificity:	AA 71-120
Reactivity:	Human, Mouse, Rat, Guinea Pig, Pig, Hamster, Monkey
Host:	Rabbit
Clonality:	Polyclonal
Conjugate:	This SLC25A22 antibody is un-conjugated
Application:	Western Blotting (WB)

Product Details

Immunogen:	Synthetic peptide located between aa71-120 of human SLC25A22 (Q9H936, NP_078974). Percent identity by BLAST analysis: Human, Chimpanzee, Gorilla, Orangutan, Gibbon, Monkey, Galago, Marmoset, Mouse, Rat, Hamster, Pig, Guinea pig, Catfish (100%), Elephant, Panda (92%), Bovine, Turkey, Zebra finch, Chicken, Xenopus, Zebrafish (85%). Type of Immunogen: Synthetic peptide
Specificity:	Human SLC25A22
Predicted Reactivity:	Percent identity by BLAST analysis: Human, Mouse, Rat (100%) Chicken (85%).
Purification:	Immunoaffinity purified

Target Details

Target:	SLC25A22
Alternative Name:	SLC25A22 / GC1 (SLC25A22 Products)
Background:	Name/Gene ID: SLC25A22 Synonyms: SLC25A22, EIEE3, GC-1, Glutamate/H(+) symporter 1, NET44, GC1
Gene ID:	79751
NCBI Accession:	NP_078974
UniProt:	Q9H936
Pathways:	Dicarboxylic Acid Transport

Application Details

Application Notes:	Approved: WB (0.2 - 1 µg/mL) Usage: Western Blot: Suggested dilution at 1 µg/mL in 5 % skim milk / PBS buffer, and HRP conjugated anti-Rabbit IgG should be diluted in 1: 50,000 - 100,000 as secondary antibody.
Comment:	Target Species of Antibody: Human
Restrictions:	For Research Use only

Handling

Format:	Lyophilized
Reconstitution:	Distilled water
Concentration:	Lot specific
Buffer:	Lyophilized from PBS with 2 % sucrose
Handling Advice:	Avoid repeat freeze-thaw cycles.
Storage:	4 °C, -20 °C
Storage Comment:	Long term: -20°C, the use of 50% glycerol is recommended if storing aliquots in -20°C for long term use (up to 1 year) Short term (less than 1 week): 4°C. Avoid freeze-thaw cycles.

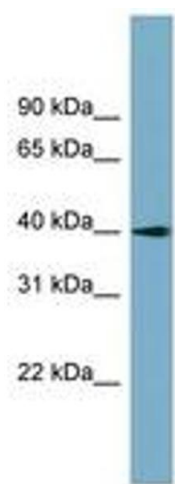


Image 1.