

Datasheet for ABIN6743232
anti-SLC25A28 antibody (AA 215-264)[Go to Product page](#)

1 Image

Overview

Quantity:	100 µL
Target:	SLC25A28
Binding Specificity:	AA 215-264
Reactivity:	Human, Mouse, Rat, Cow, Rabbit, Dog, Guinea Pig, Horse, Monkey, Bat, Pig
Host:	Rabbit
Clonality:	Polyclonal
Conjugate:	This SLC25A28 antibody is un-conjugated
Application:	Western Blotting (WB)

Product Details

Immunogen:	Synthetic peptide located between aa215-264 of human SLC25A28 (Q96A46, NP_112489). Percent identity by BLAST analysis: Human, Chimpanzee, Gorilla, Gibbon, Monkey, Galago, Marmoset, Mouse, Rat, Elephant, Panda, Dog, Bovine, Bat, Rabbit, Horse, Pig, Guinea pig (100%), Platypus (85%). Type of Immunogen: Synthetic peptide
Specificity:	Human SLC25A28
Predicted Reactivity:	Percent identity by BLAST analysis: Rat, Dog, Bovine, Rabbit, Pig, Guinea pig (100%).
Purification:	Immunoaffinity purified

Target Details

Target:	SLC25A28
Alternative Name:	SLC25A28 (SLC25A28 Products)
Background:	Name/Gene ID: SLC25A28 Synonyms: SLC25A28, Mitoferrin 2, MRS4L, HMRS3/4, MFRN2, MRS3/4, Mitoferrin-2, NPD016
Gene ID:	81894
NCBI Accession:	NP_112489
UniProt:	Q96A46
Pathways:	Transition Metal Ion Homeostasis

Application Details

Application Notes:	Approved: WB (0.2 - 1 µg/mL) Usage: Western Blot: Suggested dilution at 1 µg/mL in 5 % skim milk / PBS buffer, and HRP conjugated anti-Rabbit IgG should be diluted in 1: 50,000 - 100,000 as secondary antibody. Not recommended for: IHC-P
Comment:	Target Species of Antibody: Human
Restrictions:	For Research Use only

Handling

Format:	Lyophilized
Reconstitution:	Distilled water
Concentration:	Lot specific
Buffer:	Lyophilized from PBS with 2 % sucrose
Handling Advice:	Avoid repeat freeze-thaw cycles.
Storage:	4 °C, -20 °C
Storage Comment:	Long term: -20°C, the use of 50% glycerol is recommended if storing aliquots in -20°C for long term use (up to 1 year) Short term (less than 1 week): 4°C. Avoid freeze-thaw cycles.

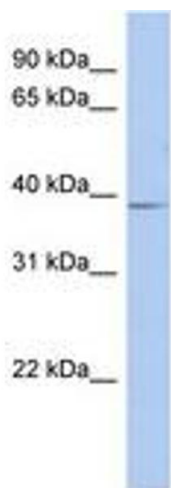


Image 1.