

Datasheet for ABIN6743234
anti-Slc26a9 antibody (AA 683-732)[Go to Product page](#)

1 Image

Overview

Quantity:	100 µL
Target:	Slc26a9
Binding Specificity:	AA 683-732
Reactivity:	Human, Mouse, Rabbit, Rat, Guinea Pig, Horse, Monkey, Bat, Hamster
Host:	Rabbit
Clonality:	Polyclonal
Conjugate:	This Slc26a9 antibody is un-conjugated
Application:	Western Blotting (WB)

Product Details

Immunogen:	Synthetic peptide located between aa683-732 of human SLC26A9 (Q7LBE3, NP_443166). Percent identity by BLAST analysis: Human, Gorilla, Gibbon, Monkey, Galago, Marmoset, Mouse, Hamster, Elephant, Bat, Horse, Guinea pig (100%), Panda, Dog, Bovine, Opossum (92%), Rat, Rabbit, Turkey, Zebra finch, Chicken (84%). Type of Immunogen: Synthetic peptide
Specificity:	Human SLC26A9
Predicted Reactivity:	Percent identity by BLAST analysis: Human, Horse (100%) Dog, Bovine (92%) Rat, Rabbit, Chicken (84%).
Purification:	Immunoaffinity purified

Target Details

Target:	Slc26a9
Alternative Name:	SLC26A9 (Slc26a9 Products)
Background:	Name/Gene ID: SLC26A9 Subfamily: Sulfate transporter Family: Transporter Synonyms: SLC26A9, Anion transporter/exchanger-9
Gene ID:	115019
NCBI Accession:	NP_443166
UniProt:	Q7LBE3

Application Details

Application Notes:	Approved: WB (0.2 - 1 µg/mL) Usage: Western Blot: Suggested dilution at 1 µg/mL in 5 % skim milk / PBS buffer, and HRP conjugated anti-Rabbit IgG should be diluted in 1: 50,000 - 100,000 as secondary antibody.
Comment:	Target Species of Antibody: Human
Restrictions:	For Research Use only

Handling

Format:	Lyophilized
Reconstitution:	Distilled water
Concentration:	Lot specific
Buffer:	Lyophilized from PBS with 2 % sucrose
Handling Advice:	Avoid repeat freeze-thaw cycles.
Storage:	4 °C, -20 °C
Storage Comment:	Long term: -20°C, the use of 50% glycerol is recommended if storing aliquots in -20°C for long term use (up to 1 year) Short term (less than 1 week): 4°C. Avoid freeze-thaw cycles.

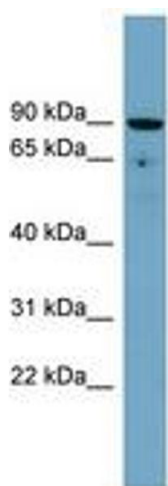


Image 1.