



[Go to Product page](#)

Datasheet for ABIN6743237

anti-GLUT12 antibody (AA 287-336)

1 Image

Overview

Quantity:	100 µL
Target:	GLUT12 (SLC2A12)
Binding Specificity:	AA 287-336
Reactivity:	Human, Mouse, Rat, Cow, Pig, Dog, Rabbit, Horse, Chicken, Monkey, Bat, Insect
Host:	Rabbit
Clonality:	Polyclonal
Conjugate:	This GLUT12 antibody is un-conjugated
Application:	Western Blotting (WB)

Product Details

Immunogen:	Synthetic peptide located between aa287-336 of human SLC2A12 (Q8TD20, NP_660159). Percent identity by BLAST analysis: Human, Chimpanzee, Gorilla, Gibbon, Monkey, Galago, Marmoset, Mouse, Rat, Elephant, Panda, Dog, Bovine, Bat, Rabbit, Horse, Pig, Opossum, Turkey, Chicken, Platypus, Mosquito (100%), Guinea pig, Xenopus (92%). Type of Immunogen: Synthetic peptide
Specificity:	Human SLC2A12 / GLUT12
Predicted Reactivity:	Percent identity by BLAST analysis: Mouse, Rat, Dog, Rabbit, Pig, Chicken (100%) Guinea pig (92%).
Purification:	Immunoaffinity purified

Target Details

Target:	GLUT12 (SLC2A12)
Alternative Name:	SLC2A12 / GLUT12 (SLC2A12 Products)
Background:	Name/Gene ID: SLC2A12 Subfamily: Sugar transporter Family: Transporter Synonyms: SLC2A12, Glucose transporter 12, Glucose transporter type 12, GLUT-12, GLUT12, GLUT8
Gene ID:	154091
NCBI Accession:	NP_660159
UniProt:	Q8TD20
Pathways:	Warburg Effect

Application Details

Application Notes:	Approved: WB (0.2 - 1 µg/mL) Usage: Western Blot: Suggested dilution at 1 µg/mL in 5 % skim milk / PBS buffer, and HRP conjugated anti-Rabbit IgG should be diluted in 1: 50,000 - 100,000 as secondary antibody.
Comment:	Target Species of Antibody: Human
Restrictions:	For Research Use only

Handling

Format:	Lyophilized
Reconstitution:	Distilled water
Concentration:	Lot specific
Buffer:	Lyophilized from PBS with 2 % sucrose
Handling Advice:	Avoid repeat freeze-thaw cycles.
Storage:	4 °C, -20 °C
Storage Comment:	Long term: -20°C, the use of 50% glycerol is recommended if storing aliquots in -20°C for long term use (up to 1 year)

Handling

Short term (less than 1 week): 4°C. Avoid freeze-thaw cycles.

Images

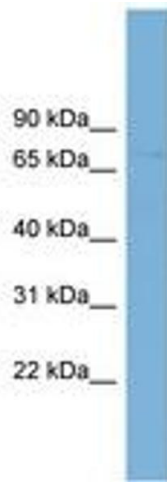


Image 1.