



[Go to Product page](#)

Datasheet for ABIN6743240  
**anti-SLC24A4 antibody (AA 124-173)**

1 Image

### Overview

Quantity:	100 µL
Target:	SLC24A4 (Slc24a4)
Binding Specificity:	AA 124-173
Reactivity:	Human, Mouse, Rat, Cow, Dog, Guinea Pig, Horse, Rabbit, Zebrafish (Danio rerio), Chicken, Monkey, Pig, Xenopus laevis
Host:	Rabbit
Clonality:	Polyclonal
Conjugate:	This SLC24A4 antibody is un-conjugated
Application:	Western Blotting (WB)

### Product Details

Immunogen:	Synthetic peptide located between aa124-173 of human SLC24A4 (Q8NFF2, NP_705932). Percent identity by BLAST analysis: Human, Chimpanzee, Gorilla, Gibbon, Monkey, Galago, Marmoset, Mouse, Rat, Elephant, Panda, Dog, Bovine, Rabbit, Horse, Pig, Opossum, Guinea pig, Turkey, Zebra finch, Chicken, Platypus, Lizard, Xenopus (100%), Bat, Stickleback (92%), Zebrafish (85%).  Type of Immunogen: Synthetic peptide
Specificity:	Human SLC24A4
Predicted Reactivity:	Percent identity by BLAST analysis: Human, Mouse, Rat, Dog, Bovine, Rabbit, Horse, Pig, Guinea pig, Chicken (100%) Zebrafish (85%).

## Product Details

---

Purification: Immunoaffinity purified

## Target Details

---

Target: SLC24A4 (Slc24a4)

Alternative Name: SLC24A4 / NCKX4 ([Slc24a4 Products](#))

Background: Name/Gene ID: SLC24A4  
Subfamily: Calcium:cation antiporter  
Family: Transporter

Synonyms: SLC24A4, SHEP6, NCKX4

Gene ID: 123041

NCBI Accession: [NP\\_705932](#)

UniProt: [Q8NFF2](#)

## Application Details

---

Application Notes: Approved: WB (0.2 - 1 µg/mL)

Usage: Western Blot: Suggested dilution at 1 µg/mL in 5 % skim milk / PBS buffer, and HRP conjugated anti-Rabbit IgG should be diluted in 1: 50,000 - 100,000 as secondary antibody.

Comment: Target Species of Antibody: Human

Restrictions: For Research Use only

## Handling

---

Format: Lyophilized

Reconstitution: Distilled water

Concentration: Lot specific

Buffer: Lyophilized from PBS with 2 % sucrose

Handling Advice: Avoid repeat freeze-thaw cycles.

Storage: 4 °C, -20 °C

Storage Comment: Long term: -20°C, the use of 50% glycerol is recommended if storing aliquots in -20°C for long

## Handling

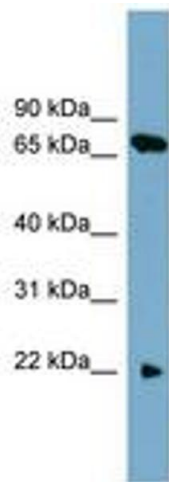
---

term use (up to 1 year)

Short term (less than 1 week): 4°C. Avoid freeze-thaw cycles.

## Images

---



**Image 1.**