



[Go to Product page](#)

Datasheet for ABIN6743262
anti-FBXO10 antibody (AA 324-373)

1 Image

Overview

Quantity:	100 µL
Target:	FBXO10
Binding Specificity:	AA 324-373
Reactivity:	Human, Dog, Horse
Host:	Rabbit
Clonality:	Polyclonal
Conjugate:	This FBXO10 antibody is un-conjugated
Application:	Western Blotting (WB)

Product Details

Immunogen:	Synthetic peptide located between aa324-373 of human FBXO10 (Q9UK96, NP_036298). Percent identity by BLAST analysis: Human, Chimpanzee, Gorilla, Gibbon, Monkey, Galago, Panda, Dog, Horse (100%), Marmoset, Hamster, Guinea pig (92%). Type of Immunogen: Synthetic peptide
Specificity:	Human FBXO10
Predicted Reactivity:	Percent identity by BLAST analysis: Human, Dog, Horse (100%) Guinea pig (92%).
Purification:	Immunoaffinity purified

Target Details

Target:	FBXO10
---------	--------

Target Details

Alternative Name: [FBXO10 \(FBXO10 Products\)](#)

Background: Name/Gene ID: FBXO10

Family: F-Box

Synonyms: FBXO10, F-box only protein 10, F-box protein 10, FBX10, F-box protein Fbx10, PRMT11

Gene ID: 26267

NCBI Accession: [NP_036298](#)

UniProt: [Q9UK96](#)

Application Details

Application Notes: Approved: WB (0.2 - 1 µg/mL)

Usage: Western Blot: Suggested dilution at 1 µg/mL in 5 % skim milk / PBS buffer, and HRP conjugated anti-Rabbit IgG should be diluted in 1: 50,000 - 100,000 as secondary antibody.

Comment: Target Species of Antibody: Human

Restrictions: For Research Use only

Handling

Format: Lyophilized

Reconstitution: Distilled water

Concentration: Lot specific

Buffer: Lyophilized from PBS with 2 % sucrose

Handling Advice: Avoid repeat freeze-thaw cycles.

Storage: 4 °C, -20 °C

Storage Comment: Long term: -20°C, the use of 50% glycerol is recommended if storing aliquots in -20°C for long term use (up to 1 year)

Short term (less than 1 week): 4°C. Avoid freeze-thaw cycles.

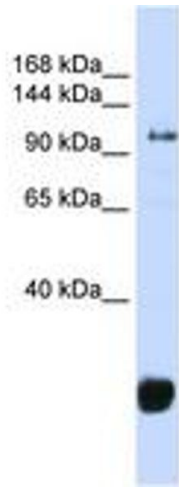


Image 1.