

Datasheet for ABIN6743277
anti-FAM160B1 antibody (AA 35-84)[Go to Product page](#)

1 Image

Overview

Quantity:	100 µL
Target:	FAM160B1
Binding Specificity:	AA 35-84
Reactivity:	Human, Mouse, Horse, Zebrafish (Danio rerio), Cow, Rabbit, Dog, Rat, Guinea Pig, Monkey, Bat, Chicken, Pig, Xenopus laevis
Host:	Rabbit
Clonality:	Polyclonal
Conjugate:	This FAM160B1 antibody is un-conjugated
Application:	Western Blotting (WB)

Product Details

Immunogen:	Synthetic peptide located between aa35-84 of human FAM160B1 (A0JPG1, NP_065991). Percent identity by BLAST analysis: Human, Chimpanzee, Gorilla, Gibbon, Monkey, Galago, Marmoset, Mouse, Rat, Elephant, Dog, Bovine, Bat, Rabbit, Horse, Pig, Opossum, Guinea pig, Turkey, Zebra finch, Chicken, Platypus, Xenopus, Stickleback, Zebrafish (100%). Type of Immunogen: Synthetic peptide
Specificity:	Human FAM160B1
Predicted Reactivity:	Percent identity by BLAST analysis: Human, Rat, Dog, Rabbit, Horse, Guinea pig, Chicken, Zebrafish (100%).
Purification:	Immunoaffinity purified

Target Details

Target:	FAM160B1
Alternative Name:	FAM160B1 (FAM160B1 Products)
Background:	Name/Gene ID: FAM160B1 Synonyms: FAM160B1, RP11-106M7.3, BA106M7.3, KIAA1600, Protein FAM160B1
Gene ID:	57700
NCBI Accession:	NP_065991
UniProt:	Q5W0V3

Application Details

Application Notes:	Approved: WB (0.2 - 1 µg/mL) Usage: Western Blot: Suggested dilution at 1 µg/mL in 5 % skim milk / PBS buffer, and HRP conjugated anti-Rabbit IgG should be diluted in 1: 50,000 - 100,000 as secondary antibody.
Comment:	Target Species of Antibody: Human
Restrictions:	For Research Use only

Handling

Format:	Lyophilized
Reconstitution:	Distilled water
Concentration:	Lot specific
Buffer:	Lyophilized from PBS with 2 % sucrose
Handling Advice:	Avoid repeat freeze-thaw cycles.
Storage:	4 °C, -20 °C
Storage Comment:	Long term: -20°C, the use of 50% glycerol is recommended if storing aliquots in -20°C for long term use (up to 1 year) Short term (less than 1 week): 4°C. Avoid freeze-thaw cycles.

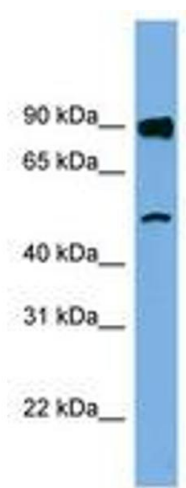


Image 1.