

Datasheet for ABIN6743281  
**anti-RAB40C antibody (AA 35-84)**[Go to Product page](#)

## 1 Image

## Overview

Quantity:	100 µL
Target:	RAB40C
Binding Specificity:	AA 35-84
Reactivity:	Human, Mouse, Rat, Cow, Goat, Monkey, Bat, Chicken, Pig
Host:	Rabbit
Clonality:	Polyclonal
Conjugate:	This RAB40C antibody is un-conjugated
Application:	Western Blotting (WB)

## Product Details

Immunogen:	Synthetic peptide located between aa35-84 of human RAB40C (Q96S21, NP_066991). Percent identity by BLAST analysis: Human, Gorilla, Gibbon, Baboon, Galago, Marmoset, Mouse, Rat, Goat, Elephant, Panda, Bovine, Bat, Opossum, Zebra finch, Chicken (100%), Guinea pig (93%), Xenopus, Stickleback, Zebrafish (92%), Pig (85%).  Type of Immunogen: Synthetic peptide
Specificity:	Human RAB40C
Predicted Reactivity:	Percent identity by BLAST analysis: Human, Mouse, Rat, Bovine, Goat, Chicken (100%) Guinea pig (93%) Zebrafish (92%) Pig (85%).
Purification:	Immunoaffinity purified

## Target Details

Target:	RAB40C
Alternative Name:	RAB40C ( <a href="#">RAB40C Products</a> )
Background:	Name/Gene ID: RAB40C  Synonyms: RAB40C, RARL, Ras-related protein Rab-40C, RAS-like GTPase, RAS-like, family 8, member C, RAR (RAS like GTPASE) like, Rar-like protein, RASL8C, RAR like
Gene ID:	57799
NCBI Accession:	<a href="#">NP_066991</a>
UniProt:	<a href="#">Q96S21</a>

## Application Details

Application Notes:	Approved: WB (0.2 - 1 µg/mL)  Usage: Western Blot: Suggested dilution at 1 µg/mL in 5 % skim milk / PBS buffer, and HRP conjugated anti-Rabbit IgG should be diluted in 1: 50,000 - 100,000 as secondary antibody.
Comment:	Target Species of Antibody: Human
Restrictions:	For Research Use only

## Handling

Format:	Lyophilized
Reconstitution:	Distilled water
Concentration:	Lot specific
Buffer:	Lyophilized from PBS with 2 % sucrose
Handling Advice:	Avoid repeat freeze-thaw cycles.
Storage:	4 °C, -20 °C
Storage Comment:	Long term: -20°C, the use of 50% glycerol is recommended if storing aliquots in -20°C for long term use (up to 1 year)  Short term (less than 1 week): 4°C. Avoid freeze-thaw cycles.

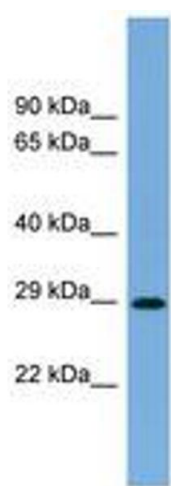


Image 1.