



[Go to Product page](#)

Datasheet for ABIN6743282
anti-WFDC1 antibody (AA 35-84)

1 Image

Overview

Quantity:	100 µL
Target:	WFDC1
Binding Specificity:	AA 35-84
Reactivity:	Human, Monkey
Host:	Rabbit
Clonality:	Polyclonal
Conjugate:	This WFDC1 antibody is un-conjugated
Application:	Western Blotting (WB)

Product Details

Immunogen:	Synthetic peptide located between aa35-84 of human WFDC1 (Q9HC57, NP_067020). Percent identity by BLAST analysis: Human, Chimpanzee, Gorilla, Marmoset (100%), Gibbon (92%), Monkey (85%). Type of Immunogen: Synthetic peptide
Specificity:	Human WFDC1
Predicted Reactivity:	Percent identity by BLAST analysis: Human (100%).
Purification:	Immunoaffinity purified

Target Details

Target:	WFDC1
---------	-------

Target Details

Alternative Name: PS20 / WFDC1 ([WFDC1 Products](#))

Background: Name/Gene ID: WFDC1

Synonyms: WFDC1, Prostate stromal protein ps20, PS20, Ps20 growth inhibitor

Gene ID: 58189

NCBI Accession: [NP_067020](#)

UniProt: [Q9HC57](#)

Application Details

Application Notes: Approved: WB (0.2 - 1 µg/mL)

Usage: Western Blot: Suggested dilution at 1 µg/mL in 5 % skim milk / PBS buffer, and HRP conjugated anti-Rabbit IgG should be diluted in 1: 50,000 - 100,000 as secondary antibody.

Comment: Target Species of Antibody: Human

Restrictions: For Research Use only

Handling

Format: Lyophilized

Reconstitution: Distilled water

Concentration: Lot specific

Buffer: Lyophilized from PBS with 2 % sucrose

Handling Advice: Avoid repeat freeze-thaw cycles.

Storage: 4 °C, -20 °C

Storage Comment: Long term: -20°C, the use of 50% glycerol is recommended if storing aliquots in -20°C for long term use (up to 1 year)

Short term (less than 1 week): 4°C. Avoid freeze-thaw cycles.

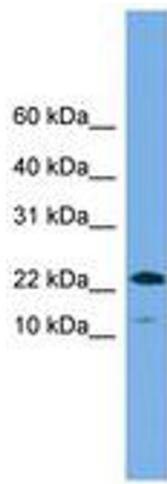


Image 1.