



[Go to Product page](#)

Datasheet for ABIN6743295
anti-PDE3A antibody (AA 360-409)

1 Image

Overview

Quantity:	100 µL
Target:	PDE3A
Binding Specificity:	AA 360-409
Reactivity:	Human, Monkey, Cow, Pig, Horse
Host:	Rabbit
Clonality:	Polyclonal
Conjugate:	This PDE3A antibody is un-conjugated
Application:	Western Blotting (WB)

Product Details

Immunogen:	Synthetic peptide located between aa360-409 of human PDE3A (Q14432, NP_000912). Percent identity by BLAST analysis: Human, Chimpanzee, Gorilla, Monkey, Marmoset (100%), Gibbon (92%), Elephant, Bat, Horse (85%). Type of Immunogen: Synthetic peptide
Specificity:	Human PDE3A
Predicted Reactivity:	Percent identity by BLAST analysis: Human (100%) Horse (85%).
Purification:	Immunoaffinity purified

Target Details

Target:	PDE3A
---------	-------

Target Details

Alternative Name:	PDE3A (PDE3A Products)
Background:	Name/Gene ID: PDE3A Subfamily: PDE - cAMP/cGMP dual-specific, cGMP-inhibited Family: Phosphodiesterase Synonyms: PDE3A, CGI-PDE-A, HcGIP2, Phosphodiesterase 3a, Phosphodiesterase isoform 3a, CGI-PDE, CGI-PDE A, CGIP2, HPDE-3A, Phosphodiesterase type 3A
Gene ID:	5139
NCBI Accession:	NP_000912
UniProt:	Q14432
Pathways:	cAMP Metabolic Process

Application Details

Application Notes:	Approved: WB (0.2 - 1 µg/mL) Usage: Western Blot: Suggested dilution at 1 µg/mL in 5 % skim milk / PBS buffer, and HRP conjugated anti-Rabbit IgG should be diluted in 1: 50,000 - 100,000 as secondary antibody.
Comment:	Target Species of Antibody: Human
Restrictions:	For Research Use only

Handling

Format:	Lyophilized
Reconstitution:	Distilled water
Concentration:	Lot specific
Buffer:	Lyophilized from PBS with 2 % sucrose
Handling Advice:	Avoid repeat freeze-thaw cycles.
Storage:	4 °C, -20 °C
Storage Comment:	Long term: -20°C, the use of 50% glycerol is recommended if storing aliquots in -20°C for long term use (up to 1 year) Short term (less than 1 week): 4°C. Avoid freeze-thaw cycles.

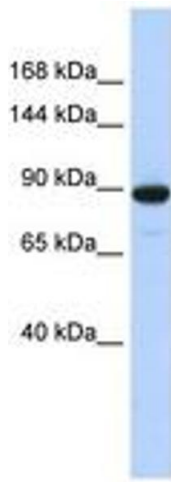


Image 1.