



[Go to Product page](#)

Datasheet for ABIN6743299  
**anti-MTUS1 antibody (C-Term)**

1 Image

Overview

Quantity:	100 µL
Target:	MTUS1
Binding Specificity:	C-Term
Reactivity:	Human, Dog, Guinea Pig, Rabbit, Cow, Monkey, Pig
Host:	Rabbit
Clonality:	Polyclonal
Conjugate:	This MTUS1 antibody is un-conjugated
Application:	Western Blotting (WB)

Product Details

Immunogen:	Synthetic peptide from C-Terminus of human MTUS1 (Q9ULD2, NP_001001924). Percent identity by BLAST analysis: Human, Gorilla, Orangutan, Gibbon, Monkey, Marmoset, Panda, Dog, Bovine, Pig (100%), Mouse, Rat, Elephant, Bat (92%), Galago, Rabbit, Guinea pig (85%).  Type of Immunogen: Synthetic peptide
Specificity:	Human MTUS1
Predicted Reactivity:	Percent identity by BLAST analysis: Human, Dog, Bovine, Pig (100%) Mouse, Rat (92%) Rabbit, Guinea pig (85%).
Purification:	Immunoaffinity purified

## Target Details

---

Target:	MTUS1
Alternative Name:	MTUS1 ( <a href="#">MTUS1 Products</a> )
Background:	Name/Gene ID: MTUS1  Synonyms: MTUS1, ATBP, ATIP, ATIP1, AT2 receptor-binding protein, AT2R binding protein, GK1, MTSG1, Transcription factor MTSG1, KIAA1288, MP44
Gene ID:	57509
NCBI Accession:	<a href="#">NP_001001924</a>
UniProt:	<a href="#">Q9ULD2</a>

## Application Details

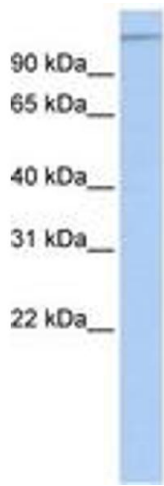
---

Application Notes:	Approved: WB (0.2 - 1 µg/mL)  Usage: Western Blot: Suggested dilution at 1 µg/mL in 5 % skim milk / PBS buffer, and HRP conjugated anti-Rabbit IgG should be diluted in 1: 50,000 - 100,000 as secondary antibody.
Comment:	Target Species of Antibody: Human
Restrictions:	For Research Use only

## Handling

---

Format:	Lyophilized
Reconstitution:	Distilled water
Concentration:	Lot specific
Buffer:	Lyophilized from PBS with 2 % sucrose
Handling Advice:	Avoid repeat freeze-thaw cycles.
Storage:	4 °C, -20 °C
Storage Comment:	Long term: -20°C, the use of 50% glycerol is recommended if storing aliquots in -20°C for long term use (up to 1 year)  Short term (less than 1 week): 4°C. Avoid freeze-thaw cycles.



**Image 1.**