



[Go to Product page](#)

Datasheet for ABIN6743307
anti-LRRC52 antibody (AA 35-84)

1 Image

Overview

Quantity:	100 µL
Target:	LRRC52
Binding Specificity:	AA 35-84
Reactivity:	Human, Guinea Pig
Host:	Rabbit
Clonality:	Polyclonal
Conjugate:	This LRRC52 antibody is un-conjugated
Application:	Western Blotting (WB)

Product Details

Immunogen:	Synthetic peptide located between aa35-84 of human LRRC52 (Q8N7C0, NP_001005214). Percent identity by BLAST analysis: Human, Chimpanzee, Gorilla, Gibbon, Monkey (100%), Marmoset, Rabbit (92%), Rat, Bovine, Pig (91%), Bat (85%), Mouse, Guinea pig (83%). Type of Immunogen: Synthetic peptide
Specificity:	Human LRRC52
Predicted Reactivity:	Percent identity by BLAST analysis: Rat, Bovine (91%) Guinea pig (83%).
Purification:	Immunoaffinity purified

Target Details

Target:	LRRC52
---------	--------

Target Details

Alternative Name: [LRRC52 \(LRRC52 Products\)](#)

Background: Name/Gene ID: LRRC52

Synonyms: LRRC52

Gene ID: 440699

NCBI Accession: [NP_001005214](#)

UniProt: [Q8N7C0](#)

Application Details

Application Notes: Approved: WB (0.2 - 1 µg/mL)

Usage: Western Blot: Suggested dilution at 1 µg/mL in 5 % skim milk / PBS buffer, and HRP conjugated anti-Rabbit IgG should be diluted in 1: 50,000 - 100,000 as secondary antibody.

Comment: Target Species of Antibody: Human

Restrictions: For Research Use only

Handling

Format: Lyophilized

Reconstitution: Distilled water

Concentration: Lot specific

Buffer: Lyophilized from PBS with 2 % sucrose

Handling Advice: Avoid repeat freeze-thaw cycles.

Storage: 4 °C, -20 °C

Storage Comment: Long term: -20°C, the use of 50% glycerol is recommended if storing aliquots in -20°C for long term use (up to 1 year)

Short term (less than 1 week): 4°C. Avoid freeze-thaw cycles.

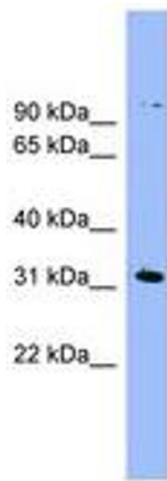


Image 1.