



Datasheet for ABIN6743310
anti-B4GALT2 antibody (AA 287-336)



[Go to Product page](#)

1 Image

Overview

Quantity:	100 µL
Target:	B4GALT2
Binding Specificity:	AA 287-336
Reactivity:	Human, Mouse, Rat, Cow, Horse, Rabbit, Dog, Guinea Pig, Monkey, Bat, Hamster
Host:	Rabbit
Clonality:	Polyclonal
Conjugate:	This B4GALT2 antibody is un-conjugated
Application:	Western Blotting (WB)

Product Details

Immunogen:	Synthetic peptide located between aa287-336 of human B4GALT2 (O60909, NP_001005417). Percent identity by BLAST analysis: Human, Chimpanzee, Gorilla, Gibbon, Monkey, Galago, Mouse, Rat, Hamster, Elephant, Panda, Dog, Bovine, Bat, Rabbit, Horse, Opossum, Guinea pig (100%), Turkey, Zebra finch, Chicken, Platypus, Xenopus, Stickleback, Zebrafish (92%), Sheep (90%), Lizard (85%), Marmoset, Goat, Pig (84%). Type of Immunogen: Synthetic peptide
Specificity:	Human B4GALT2
Predicted Reactivity:	Percent identity by BLAST analysis: Human, Mouse, Rat, Dog, Bovine, Rabbit, Horse, Guinea pig (100%) Chicken, Xenopus (92%).
Purification:	Immunoaffinity purified

Target Details

Target:	B4GALT2
Alternative Name:	B4GALT2 (B4GALT2 Products)
Background:	Name/Gene ID: B4GALT2 Synonyms: B4GALT2, Beta-4-GalT2, Beta4Gal-T2, B4Gal-T2, B4Gal-T3, Beta-1,4-GalTase 2
Gene ID:	8704
NCBI Accession:	NP_001005417
UniProt:	O60909
Pathways:	Glycosaminoglycan Metabolic Process

Application Details

Application Notes:	Approved: WB (0.2 - 1 µg/mL) Usage: Western Blot: Suggested dilution at 1 µg/mL in 5 % skim milk / PBS buffer, and HRP conjugated anti-Rabbit IgG should be diluted in 1: 50,000 - 100,000 as secondary antibody.
Comment:	Target Species of Antibody: Human
Restrictions:	For Research Use only

Handling

Format:	Lyophilized
Reconstitution:	Distilled water
Concentration:	Lot specific
Buffer:	Lyophilized from PBS with 2 % sucrose
Handling Advice:	Avoid repeat freeze-thaw cycles.
Storage:	4 °C,-20 °C
Storage Comment:	Long term: -20°C, the use of 50% glycerol is recommended if storing aliquots in -20°C for long term use (up to 1 year) Short term (less than 1 week): 4°C. Avoid freeze-thaw cycles.

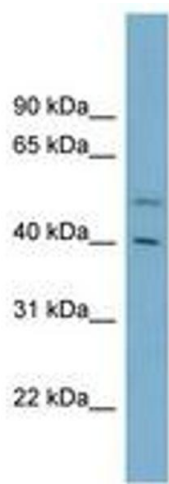


Image 1.