

Datasheet for ABIN6743312

anti-C-Type Lectin Domain Family 6, Member A (CLEC6A) (AA 35-84) antibody[Go to Product page](#)**1** Image

Overview

| | |
|----------------------|--|
| Quantity: | 100 µL |
| Target: | C-Type Lectin Domain Family 6, Member A (CLEC6A) |
| Binding Specificity: | AA 35-84 |
| Reactivity: | Human |
| Host: | Rabbit |
| Clonality: | Polyclonal |
| Conjugate: | Un-conjugated |
| Application: | Western Blotting (WB) |

Product Details

| | |
|-----------------------|---|
| Immunogen: | Synthetic peptide located between aa35-84 of human CLEC6A (Q6EIG7, NP_001007034). Percent identity by BLAST analysis: Human, Gorilla (100%), Monkey (92%), Mouse, Rat (90%), Marmoset, Bovine (84%). Type of Immunogen: Synthetic peptide |
| Specificity: | Human CLEC6A / Dectin 2 |
| Predicted Reactivity: | Percent identity by BLAST analysis: |
| Purification: | Immunoaffinity purified |

Target Details

| | |
|---------|--|
| Target: | C-Type Lectin Domain Family 6, Member A (CLEC6A) |
|---------|--|

Target Details

| | |
|-------------------|--|
| Alternative Name: | CLEC6A / Dectin 2 (CLEC6A Products) |
| Background: | Name/Gene ID: CLEC6A Synonyms: CLEC6A, CLEC4N, CLECSF10, Dectin-2, Dectin 2, DC-associated C-type lectin 2, DECTIN2 |
| Gene ID: | 93978 |
| NCBI Accession: | NP_001007034 |
| UniProt: | Q6EIG7 |

Application Details

| | |
|--------------------|--|
| Application Notes: | Approved: WB (0.2 - 1 µg/mL) Usage: Western Blot: Suggested dilution at 1 µg/mL in 5 % skim milk / PBS buffer, and HRP conjugated anti-Rabbit IgG should be diluted in 1: 50,000 - 100,000 as secondary antibody. |
| Comment: | Target Species of Antibody: Human |
| Restrictions: | For Research Use only |

Handling

| | |
|------------------|---|
| Format: | Lyophilized |
| Reconstitution: | Distilled water |
| Concentration: | Lot specific |
| Buffer: | Lyophilized from PBS with 2 % sucrose |
| Handling Advice: | Avoid repeat freeze-thaw cycles. |
| Storage: | 4 °C, -20 °C |
| Storage Comment: | Long term: -20°C, the use of 50% glycerol is recommended if storing aliquots in -20°C for long term use (up to 1 year) Short term (less than 1 week): 4°C. Avoid freeze-thaw cycles. |

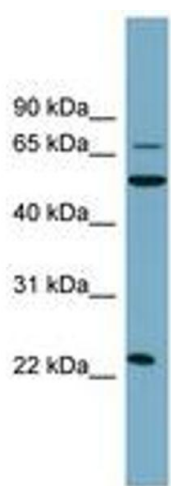


Image 1.