



[Go to Product page](#)

Datasheet for ABIN6743321  
**anti-AWAT1 antibody (AA 71-120)**

1 Image

Overview

Quantity:	100 µL
Target:	AWAT1
Binding Specificity:	AA 71-120
Reactivity:	Human, Mouse, Rat, Guinea Pig, Monkey, Bat
Host:	Rabbit
Clonality:	Polyclonal
Conjugate:	This AWAT1 antibody is un-conjugated
Application:	Western Blotting (WB)

Product Details

Immunogen:	Synthetic peptide located between aa71-120 of human AWAT1 (Q58HT5, NP_001013597). Percent identity by BLAST analysis: Human, Gorilla, Monkey, Galago, Marmoset, Bat (100%), Elephant, Dog, Bovine (92%), Mouse, Rat, Rabbit, Horse (85%), Guinea pig (84%).  Type of Immunogen: Synthetic peptide
Specificity:	Human AWAT1
Predicted Reactivity:	Percent identity by BLAST analysis: Human (100%) Dog, Bovine (92%) Mouse, Rat (85%) Guinea pig (84%).
Purification:	Immunoaffinity purified

## Target Details

---

Target:	AWAT1
Alternative Name:	AWAT1 / DGAT2L3 ( <a href="#">AWAT1 Products</a> )
Background:	Name/Gene ID: AWAT1  Synonyms: AWAT1, DGAT2L3, DGA2
Gene ID:	158833
NCBI Accession:	<a href="#">NP_001013597</a>
UniProt:	<a href="#">Q58HT5</a>

## Application Details

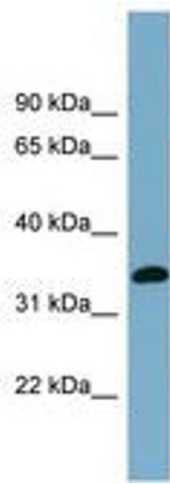
---

Application Notes:	Approved: WB (0.2 - 1 µg/mL)  Usage: Western Blot: Suggested dilution at 1 µg/mL in 5 % skim milk / PBS buffer, and HRP conjugated anti-Rabbit IgG should be diluted in 1: 50,000 - 100,000 as secondary antibody.
Comment:	Target Species of Antibody: Human
Restrictions:	For Research Use only

## Handling

---

Format:	Lyophilized
Reconstitution:	Distilled water
Concentration:	Lot specific
Buffer:	Lyophilized from PBS with 2 % sucrose
Handling Advice:	Avoid repeat freeze-thaw cycles.
Storage:	4 °C, -20 °C
Storage Comment:	Long term: -20°C, the use of 50% glycerol is recommended if storing aliquots in -20°C for long term use (up to 1 year)  Short term (less than 1 week): 4°C. Avoid freeze-thaw cycles.



**Image 1.**