



[Go to Product page](#)

Datasheet for ABIN6743323
anti-AADACL4 antibody (AA 71-120)

1 Image

Overview

Quantity:	100 µL
Target:	AADACL4
Binding Specificity:	AA 71-120
Reactivity:	Human, Rat, Guinea Pig, Dog, Hamster, Monkey
Host:	Rabbit
Clonality:	Polyclonal
Conjugate:	This AADACL4 antibody is un-conjugated
Application:	Western Blotting (WB)

Product Details

Immunogen:	Synthetic peptide located between aa71-120 of human AADACL4 (Q5VUY2, NP_001013652). Percent identity by BLAST analysis: Human, Chimpanzee, Gorilla, Gibbon, Monkey, Galago, Marmoset, Hamster, Panda, Dog, Guinea pig (100%), Mouse (92%), Pig (91%), Rat (84%), Horse (83%). Type of Immunogen: Synthetic peptide
Specificity:	Human AADACL4
Predicted Reactivity:	Percent identity by BLAST analysis: Dog (100%) Pig (91%) Rat (84%).
Purification:	Immunoaffinity purified

Target Details

Target:	AADACL4
Alternative Name:	AADACL4 (AADACL4 Products)
Background:	Name/Gene ID: AADACL4 Synonyms: AADACL4, OTTHUMG00000001889
Gene ID:	343066
NCBI Accession:	NP_001013652
UniProt:	Q5VUY2

Application Details

Application Notes:	Approved: WB (0.2 - 1 µg/mL) Usage: Western Blot: Suggested dilution at 1 µg/mL in 5 % skim milk / PBS buffer, and HRP conjugated anti-Rabbit IgG should be diluted in 1: 50,000 - 100,000 as secondary antibody.
Comment:	Target Species of Antibody: Human
Restrictions:	For Research Use only

Handling

Format:	Lyophilized
Reconstitution:	Distilled water
Concentration:	Lot specific
Buffer:	Lyophilized from PBS with 2 % sucrose
Handling Advice:	Avoid repeat freeze-thaw cycles.
Storage:	4 °C, -20 °C
Storage Comment:	Long term: -20°C, the use of 50% glycerol is recommended if storing aliquots in -20°C for long term use (up to 1 year) Short term (less than 1 week): 4°C. Avoid freeze-thaw cycles.

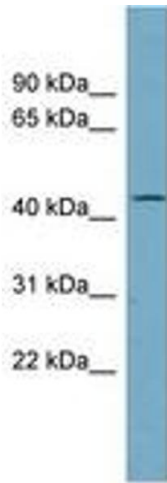


Image 1.