

Datasheet for ABIN6743324
anti-TM9SF1 antibody (AA 144-193)[Go to Product page](#)

1 Image

Overview

Quantity:	100 µL
Target:	TM9SF1
Binding Specificity:	AA 144-193
Reactivity:	Human, Mouse, Rat, Dog, Cow, Horse, Rabbit, Guinea Pig, Pig, Hamster, Monkey
Host:	Rabbit
Clonality:	Polyclonal
Conjugate:	This TM9SF1 antibody is un-conjugated
Application:	Western Blotting (WB)

Product Details

Immunogen:	Synthetic peptide located between aa144-193 of human TM9SF1 (O15321, NP_006396). Percent identity by BLAST analysis: Human, Chimpanzee, Gorilla, Orangutan, Gibbon, Monkey, Marmoset, Mouse, Rat, Hamster, Elephant, Panda, Dog, Bovine, Rabbit, Horse, Pig, Opossum, Guinea pig (100%), Xenopus, Seabass, Stickleback, Zebrafish (92%). Type of Immunogen: Synthetic peptide
Specificity:	Human TM9SF1
Predicted Reactivity:	Percent identity by BLAST analysis: Human, Mouse, Rat, Dog, Rabbit, Horse (100%) Xenopus, Zebrafish (92%).
Purification:	Immunoaffinity purified

Target Details

Target:	TM9SF1
Alternative Name:	TM9SF1 (TM9SF1 Products)
Background:	Name/Gene ID: TM9SF1 Synonyms: TM9SF1, HMP70, MP70 protein family member, MP70
Gene ID:	10548
NCBI Accession:	NP_006396
UniProt:	O15321

Application Details

Application Notes:	Approved: WB (0.2 - 1 µg/mL) Usage: Western Blot: Suggested dilution at 1 µg/mL in 5 % skim milk / PBS buffer, and HRP conjugated anti-Rabbit IgG should be diluted in 1: 50,000 - 100,000 as secondary antibody.
Comment:	Target Species of Antibody: Human
Restrictions:	For Research Use only

Handling

Format:	Lyophilized
Reconstitution:	Distilled water
Concentration:	Lot specific
Buffer:	Lyophilized from PBS with 2 % sucrose
Handling Advice:	Avoid repeat freeze-thaw cycles.
Storage:	4 °C, -20 °C
Storage Comment:	Long term: -20°C, the use of 50% glycerol is recommended if storing aliquots in -20°C for long term use (up to 1 year) Short term (less than 1 week): 4°C. Avoid freeze-thaw cycles.

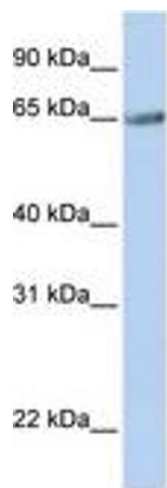


Image 1.