



[Go to Product page](#)

Datasheet for ABIN6743328  
**anti-TMCC1 antibody (AA 431-480)**

1 Image

Overview

Quantity:	100 µL
Target:	TMCC1
Binding Specificity:	AA 431-480
Reactivity:	Human, Mouse, Rat, Horse, Zebrafish (Danio rerio), Cow, Dog, Rabbit, Guinea Pig, Hamster, Xenopus laevis, Bat, Monkey, Chicken, Drosophila melanogaster
Host:	Rabbit
Clonality:	Polyclonal
Conjugate:	This TMCC1 antibody is un-conjugated
Application:	Western Blotting (WB)

Product Details

Immunogen:	Synthetic peptide located between aa431-480 of human TMCC1 (O94876, NP_001121696). Percent identity by BLAST analysis: Human, Chimpanzee, Gorilla, Orangutan, Gibbon, Monkey, Galago, Marmoset, Mouse, Rat, Hamster, Elephant, Panda, Dog, Bovine, Bat, Rabbit, Horse, Opossum, Guinea pig, Turkey, Zebra finch, Chicken, Lizard, Xenopus, Stickleback, Zebrafish, Drosophila (100%), Pig (92%).  Type of Immunogen: Synthetic peptide
Specificity:	Human TMCC1
Predicted Reactivity:	Percent identity by BLAST analysis: Human, Mouse, Rat, Dog, Bovine, Rabbit, Horse, Guinea pig, Chicken, Xenopus (100%) Pig (92%).

## Product Details

---

Purification: Immunoaffinity purified

## Target Details

---

Target: TMCC1

Alternative Name: TMCC1 ([TMCC1 Products](#))

Background: Name/Gene ID: TMCC1

Synonyms: TMCC1, KIAA0779

Gene ID: 23023

NCBI Accession: [NP\\_001121696](#)

UniProt: [O94876](#)

## Application Details

---

Application Notes: Approved: WB (0.2 - 1 µg/mL)

Usage: Western Blot: Suggested dilution at 1 µg/mL in 5 % skim milk / PBS buffer, and HRP conjugated anti-Rabbit IgG should be diluted in 1: 50,000 - 100,000 as secondary antibody.

Comment: Target Species of Antibody: Human

Restrictions: For Research Use only

## Handling

---

Format: Lyophilized

Reconstitution: Distilled water

Concentration: Lot specific

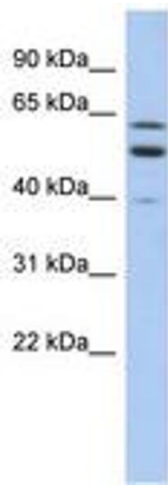
Buffer: Lyophilized from PBS with 2 % sucrose

Handling Advice: Avoid repeat freeze-thaw cycles.

Storage: 4 °C, -20 °C

Storage Comment: Long term: -20°C, the use of 50% glycerol is recommended if storing aliquots in -20°C for long term use (up to 1 year)

Short term (less than 1 week): 4°C. Avoid freeze-thaw cycles.



**Image 1.**