

Datasheet for ABIN6743337  
**anti-DPP6 antibody (AA 252-301)**[Go to Product page](#)

## 1 Image

## Overview

Quantity:	100 µL
Target:	DPP6
Binding Specificity:	AA 252-301
Reactivity:	Human, Mouse, Rat, Rabbit, Guinea Pig, Monkey
Host:	Rabbit
Clonality:	Polyclonal
Conjugate:	This DPP6 antibody is un-conjugated
Application:	Western Blotting (WB)

## Product Details

Immunogen:	Synthetic peptide located between aa252-301 of human DPP6 (P42658, NP_001034439). Percent identity by BLAST analysis: Human, Chimpanzee, Gorilla, Gibbon, Monkey, Marmoset, Mouse, Rat, Rabbit, Guinea pig (100%), Galago, Elephant, Dog, Bovine, Horse, Pig, Opossum, Platypus, Xenopus (92%), Zebra finch (90%), Turkey, Chicken (84%), Lizard (83%).  Type of Immunogen: Synthetic peptide
Specificity:	Human DPP6
Predicted Reactivity:	Percent identity by BLAST analysis: Human, Mouse, Rat, Rabbit, Guinea pig (100%) Dog, Bovine, Horse, Pig (92%) Chicken (84%).
Purification:	Immunoaffinity purified

## Target Details

Target:	DPP6
Alternative Name:	DPP6 / Dipeptidylpeptidase 6 ( <a href="#">DPP6 Products</a> )
Background:	Name/Gene ID: DPP6 Subfamily: Serine S9B Family: Protease  Synonyms: DPP6, Dipeptidylpeptidase VI, Dipeptidyl peptidase 6, Dipeptidyl peptidase VI, Dipeptidyl-peptidase 6, Dipeptidylpeptidase 6, DPP VI, DPPX, VF2, Dipeptidyl aminopeptidase-like protein 6
Gene ID:	1804
NCBI Accession:	<a href="#">NP_001034439</a>
UniProt:	<a href="#">P42658</a>

## Application Details

Application Notes:	Approved: WB (0.2 - 1 µg/mL)  Usage: Western Blot: Suggested dilution at 1 µg/mL in 5 % skim milk / PBS buffer, and HRP conjugated anti-Rabbit IgG should be diluted in 1: 50,000 - 100,000 as secondary antibody.
Comment:	Target Species of Antibody: Human
Restrictions:	For Research Use only

## Handling

Format:	Lyophilized
Reconstitution:	Distilled water
Concentration:	Lot specific
Buffer:	Lyophilized from PBS with 2 % sucrose
Handling Advice:	Avoid repeat freeze-thaw cycles.
Storage:	4 °C, -20 °C
Storage Comment:	Long term: -20°C, the use of 50% glycerol is recommended if storing aliquots in -20°C for long term use (up to 1 year)

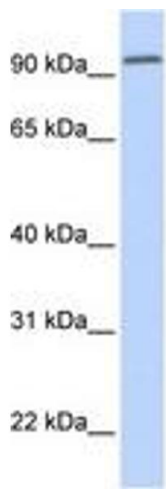
Handling

---

Short term (less than 1 week): 4°C. Avoid freeze-thaw cycles.

Images

---



**Image 1.**