



[Go to Product page](#)

Datasheet for ABIN6743340
anti-PQLC2 antibody (AA 71-120)

1 Image

Overview

Quantity:	100 µL
Target:	PQLC2
Binding Specificity:	AA 71-120
Reactivity:	Human, Dog, Horse, Pig
Host:	Rabbit
Clonality:	Polyclonal
Conjugate:	This PQLC2 antibody is un-conjugated
Application:	Western Blotting (WB)

Product Details

Immunogen:	Synthetic peptide located between aa71-120 of human PQLC2 (Q6ZP29-3, NP_001035215). Percent identity by BLAST analysis: Human, Gorilla (100%), Monkey, Pig (85%). Type of Immunogen: Synthetic peptide
Specificity:	Human PQLC2
Predicted Reactivity:	Percent identity by BLAST analysis: Human (100%) Pig (85%).
Purification:	Immunoaffinity purified

Target Details

Target:	PQLC2
Alternative Name:	PQLC2 (PQLC2 Products)

Target Details

Background:	Name/Gene ID: PQLC2 Synonyms: PQLC2, PQ loop repeat containing 2, RP4-657E11.5
Gene ID:	54896
NCBI Accession:	NP_001035215
UniProt:	Q6ZP29

Application Details

Application Notes:	Approved: WB (0.2 - 1 µg/mL) Usage: Western Blot: Suggested dilution at 1 µg/mL in 5 % skim milk / PBS buffer, and HRP conjugated anti-Rabbit IgG should be diluted in 1: 50,000 - 100,000 as secondary antibody.
Comment:	Target Species of Antibody: Human
Restrictions:	For Research Use only

Handling

Format:	Lyophilized
Reconstitution:	Distilled water
Concentration:	Lot specific
Buffer:	Lyophilized from PBS with 2 % sucrose
Handling Advice:	Avoid repeat freeze-thaw cycles.
Storage:	4 °C, -20 °C
Storage Comment:	Long term: -20°C, the use of 50% glycerol is recommended if storing aliquots in -20°C for long term use (up to 1 year) Short term (less than 1 week): 4°C. Avoid freeze-thaw cycles.

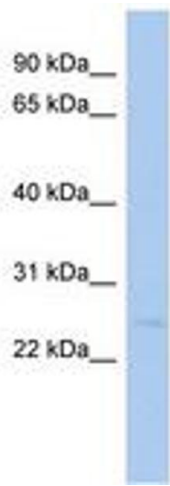


Image 1.