



Datasheet for ABIN6743346
anti-ADCY8 antibody (AA 1152-1201)



[Go to Product page](#)

1 Image

Overview

Quantity:	100 µL
Target:	ADCY8
Binding Specificity:	AA 1152-1201
Reactivity:	Human, Mouse, Rat, Rabbit, Cow, Dog, Guinea Pig, Monkey, Pig, Bat
Host:	Rabbit
Clonality:	Polyclonal
Conjugate:	This ADCY8 antibody is un-conjugated
Application:	Western Blotting (WB)

Product Details

Immunogen:	Synthetic peptide located between aa1152-1201 of human ADCY8 (P40145, NP_001106). Percent identity by BLAST analysis: Human, Chimpanzee, Gorilla, Gibbon, Monkey, Galago, Marmoset, Mouse, Rat, Elephant, Panda, Dog, Bovine, Bat, Rabbit, Pig, Guinea pig (100%), Horse (92%), Opossum, Platypus (85%). Type of Immunogen: Synthetic peptide
Specificity:	Human ADCY8
Predicted Reactivity:	Percent identity by BLAST analysis: Human, Mouse, Rat, Dog, Bovine, Rabbit, Pig (100%) Horse (92%).
Purification:	Immunoaffinity purified

Target Details

Target:	ADCY8
Alternative Name:	ADCY8 / Adenylate Cyclase 8 (ADCY8 Products)
Background:	Name/Gene ID: ADCY8 Family: Adenylate cyclase Synonyms: ADCY8, AC8, Adenylate cyclase type VIII, Adenylate cyclase, type viii, Adenylate cyclase 8 (brain), Adenylate cyclase type 8, Adenylyl cyclase 8, ATP pyrophosphate-lyase 8, Adenylyl cyclase-8, brain, HBAC1
Gene ID:	114
NCBI Accession:	NP_001106
UniProt:	P40145
Pathways:	EGFR Signaling Pathway , Neurotrophin Signaling Pathway , Thyroid Hormone Synthesis , cAMP Metabolic Process , Myometrial Relaxation and Contraction , G-protein mediated Events , Interaction of EGFR with phospholipase C-gamma

Application Details

Application Notes:	Approved: WB (0.2 - 1 µg/mL) Usage: Western Blot: Suggested dilution at 1 µg/mL in 5 % skim milk / PBS buffer, and HRP conjugated anti-Rabbit IgG should be diluted in 1: 50,000 - 100,000 as secondary antibody.
Comment:	Target Species of Antibody: Human
Restrictions:	For Research Use only

Handling

Format:	Lyophilized
Reconstitution:	Distilled water
Concentration:	Lot specific
Buffer:	Lyophilized from PBS with 2 % sucrose
Handling Advice:	Avoid repeat freeze-thaw cycles.
Storage:	4 °C, -20 °C

Handling

Storage Comment: Long term: -20°C, the use of 50% glycerol is recommended if storing aliquots in -20°C for long term use (up to 1 year)
Short term (less than 1 week): 4°C. Avoid freeze-thaw cycles.

Images

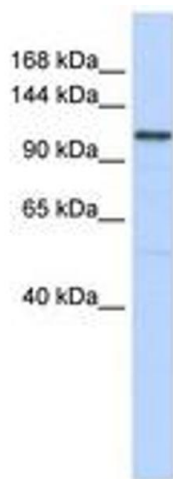


Image 1.