

Datasheet for ABIN6743366
anti-STIM1 antibody (AA 611-660)



[Go to Product page](#)

1 Image

Overview

Quantity:	100 µL
Target:	STIM1
Binding Specificity:	AA 611-660
Reactivity:	Human, Rat, Mouse, Dog, Cow
Host:	Rabbit
Clonality:	Polyclonal
Conjugate:	This STIM1 antibody is un-conjugated
Application:	Western Blotting (WB)

Product Details

Immunogen:	Synthetic peptide located between aa611-660 of human STIM1 (Q13586, NP_003147). Percent identity by BLAST analysis: Human, Chimpanzee, Gorilla, Gibbon, Monkey, Galago, Mouse, Rat (100%), Marmoset, Bat, Horse, Opossum, Guinea pig (92%), Dog, Bovine (85%). Type of Immunogen: Synthetic peptide
Specificity:	Human STIM1
Predicted Reactivity:	Percent identity by BLAST analysis: Human, Mouse, Rat (100%) Horse (92%) Dog, Bovine (85%).
Purification:	Immunoaffinity purified

Target Details

Target:	STIM1
---------	-------

Target Details

Alternative Name:	GOK / STIM1 (STIM1 Products)
Background:	Name/Gene ID: STIM1 Synonyms: STIM1, D11S4896E, Stromal interaction molecule 1, GOK, STIM1L
Gene ID:	6786
NCBI Accession:	NP_003147
UniProt:	Q13586
Pathways:	TCR Signaling , BCR Signaling

Application Details

Application Notes:	Approved: WB (0.2 - 1 µg/mL) Usage: Western Blot: Suggested dilution at 1 µg/mL in 5 % skim milk / PBS buffer, and HRP conjugated anti-Rabbit IgG should be diluted in 1: 50,000 - 100,000 as secondary antibody.
Comment:	Target Species of Antibody: Human
Restrictions:	For Research Use only

Handling

Format:	Lyophilized
Reconstitution:	Distilled water
Concentration:	Lot specific
Buffer:	Lyophilized from PBS with 2 % sucrose
Handling Advice:	Avoid repeat freeze-thaw cycles.
Storage:	4 °C, -20 °C
Storage Comment:	Long term: -20°C, the use of 50% glycerol is recommended if storing aliquots in -20°C for long term use (up to 1 year) Short term (less than 1 week): 4°C. Avoid freeze-thaw cycles.

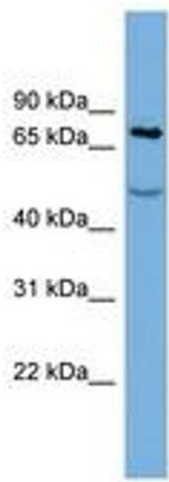


Image 1.