



[Go to Product page](#)

Datasheet for ABIN6743371

anti-Dysferlin antibody (AA 1584-1633)

1 Image

Overview

Quantity:	100 µL
Target:	Dysferlin (DYSF)
Binding Specificity:	AA 1584-1633
Reactivity:	Human, Mouse, Guinea Pig, Rabbit, Monkey
Host:	Rabbit
Clonality:	Polyclonal
Conjugate:	This Dysferlin antibody is un-conjugated
Application:	Western Blotting (WB)

Product Details

Immunogen:	Synthetic peptide located between aa1584-1633 of human DYSF (O75923, NP_003485). Percent identity by BLAST analysis: Human, Chimpanzee, Gorilla, Orangutan, Gibbon, Monkey, Galago, Marmoset, Mouse, Rabbit, Guinea pig (100%), Rat, Elephant, Dog, Bovine, Horse, Pig, Opossum (92%), Chicken (85%). Type of Immunogen: Synthetic peptide
Specificity:	Human DYSF / Dysferlin
Predicted Reactivity:	Percent identity by BLAST analysis: Human, Mouse, Rabbit, Guinea pig (100%) Rat, Dog, Bovine, Horse, Pig (92%) Chicken (85%).
Purification:	Immunoaffinity purified

Target Details

Target:	Dysferlin (DYSF)
Alternative Name:	Dysferlin (DYSF Products)
Background:	Name/Gene ID: DYSF Synonyms: DYSF, Dysferlin, Fer-1-like protein 1, FER1L1, LGMD2B, MMD1
Gene ID:	8291
NCBI Accession:	NP_003485
UniProt:	O75923

Application Details

Application Notes:	Approved: WB (0.2 - 1 µg/mL) Usage: Western Blot: Suggested dilution at 1 µg/mL in 5 % skim milk / PBS buffer, and HRP conjugated anti-Rabbit IgG should be diluted in 1: 50,000 - 100,000 as secondary antibody.
Comment:	Target Species of Antibody: Human
Restrictions:	For Research Use only

Handling

Format:	Lyophilized
Reconstitution:	Distilled water
Concentration:	Lot specific
Buffer:	Lyophilized from PBS with 2 % sucrose
Handling Advice:	Avoid repeat freeze-thaw cycles.
Storage:	4 °C, -20 °C
Storage Comment:	Long term: -20°C, the use of 50% glycerol is recommended if storing aliquots in -20°C for long term use (up to 1 year) Short term (less than 1 week): 4°C. Avoid freeze-thaw cycles.

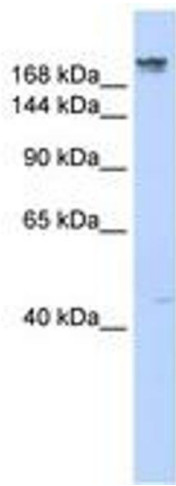


Image 1.