



Datasheet for ABIN6743372
anti-ITGA8 antibody (AA 251-300)



[Go to Product page](#)

1 Image

Overview

Quantity:	100 µL
Target:	ITGA8
Binding Specificity:	AA 251-300
Reactivity:	Human, Mouse, Rat, Dog, Zebrafish (Danio rerio), Pig
Host:	Rabbit
Clonality:	Polyclonal
Conjugate:	This ITGA8 antibody is un-conjugated
Application:	Western Blotting (WB)

Product Details

Immunogen:	Synthetic peptide located between aa251-300 of human ITGA8 (P53708, NP_003629). Percent identity by BLAST analysis: Human, Chimpanzee, Gorilla, Mouse, Rat, Elephant, Platypus (100%), Gibbon, Monkey, Galago, Marmoset, Bovine, Bat, Rabbit, Horse (92%), Guinea pig (90%), Panda, Dog, Pig, Zebra finch (85%), Xenopus (84%). Type of Immunogen: Synthetic peptide
Specificity:	Human ITGA8
Predicted Reactivity:	Percent identity by BLAST analysis: Human, Mouse, Rat (100%) Bovine, Rabbit (92%) Guinea pig (90%) Dog, Pig (85%).
Purification:	Immunoaffinity purified

Target Details

Target:	ITGA8
Alternative Name:	ITGA8 / Integrin Alpha 8 (ITGA8 Products)
Background:	Name/Gene ID: ITGA8 Family: Integrin Synonyms: ITGA8, Integrin, alpha 8, Integrin alpha-8
Gene ID:	8516
NCBI Accession:	NP_003629
UniProt:	P53708

Application Details

Application Notes:	Approved: WB (0.2 - 1 µg/mL) Usage: Western Blot: Suggested dilution at 1 µg/mL in 5 % skim milk / PBS buffer, and HRP conjugated anti-Rabbit IgG should be diluted in 1: 50,000 - 100,000 as secondary antibody.
Comment:	Target Species of Antibody: Human
Restrictions:	For Research Use only

Handling

Format:	Lyophilized
Reconstitution:	Distilled water
Concentration:	Lot specific
Buffer:	Lyophilized from PBS with 2 % sucrose
Handling Advice:	Avoid repeat freeze-thaw cycles.
Storage:	4 °C, -20 °C
Storage Comment:	Long term: -20°C, the use of 50% glycerol is recommended if storing aliquots in -20°C for long term use (up to 1 year) Short term (less than 1 week): 4°C. Avoid freeze-thaw cycles.

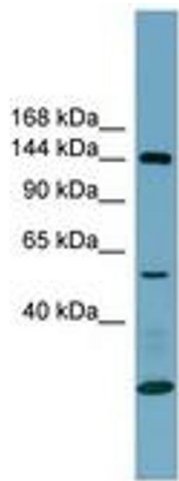


Image 1.